



ALUMINUM



TRENCH SHIELDS

MADE
IN THE
USA

AMERICAN
SHORING INC.

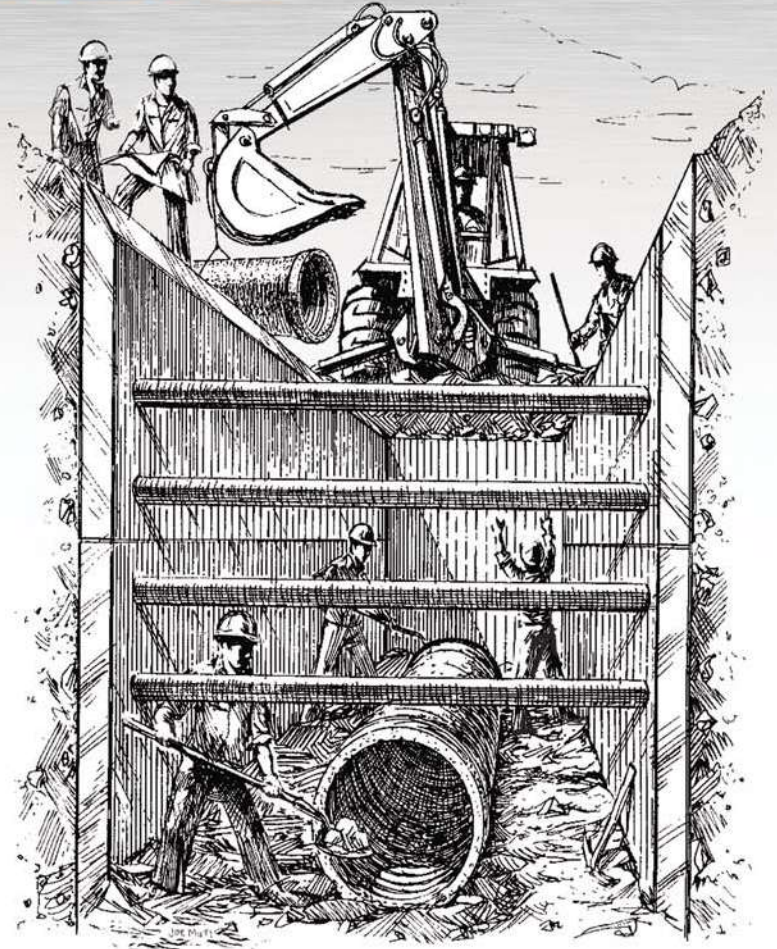
Aluminum Trench Shields

With over 35 years of experience, **American Shoring** has designed and manufactured quality trench shields for all levels of underground construction.

Our family of **Aluminum Trench Shields** is extensive and designed to maximize safety and production requirements under a wide range of soil conditions.

At **American Shoring**, handling considerations and budget guide lines are top priorities of our design team. Our recommendations have proved to be a cost benefit to municipalities and contractors.

From light duty to heavy duty high strength applications, our field experience matched with our professional manufacturing and support will ensure your best possible trench shoring solution.



**MADE
IN THE
USA**

- ★ **Maximum safety while excavating**
- ★ **Professional engineer certified to OSHA Regulations**
- ★ **Office Consultation**
- ★ **Project specifications review prior to installation at the job site**
- ★ **Observation of field conditions and installation**
- ★ **Manufacturing done on premises**
- ★ **Flexibility in design increases functionality**
- ★ **A selection of time saving features**

SALES★RENTALS★SERVICE

★ **REPAIRS** ★

★ **TRADE-INS** ★

★ **RECERTIFICATION** ★

In This Issue...

OSHA RequirementsPg. 4

How to Order a Trench ShieldPg. 5

Modular Aluminum

• Mighty Lite® "Erector Series"Pg. 6

"Erector Series" continuedPg. 8

• Mighty Lite® Shield BoxPg.10

Aluminum Trench Boxes

• 4" Wall Aluminum BoxPg. 12

• 5" Wall Aluminum BoxPg.14

• 8" Wall Aluminum BoxPg.16

• Custom Shoring TrailersPg. 17

• Aluminum Manhole ShieldPg.18

• Aluminum Slide RailPg.20
with Strike Plate Technology

• Folding Gas Tap BoxPg.22

• Grave ShoringPg.24

• Water Tap BoxPg.25

Vertical Shoring

• Hydraulic Shoring StandardPg.26

• Heavy Duty Hydraulic ShoringPg.28

• Other Hydraulic SystemsPg.29

• Hydraulic Systems- Plywood ShoresPg.30

More!...

• Parts & AccessoriesPg.31

• Slip-Not Ladder Retention SystemPg.32

• Trench JacksPg.34

• Portable Guard Rail SystemPg.35

Training by the Best

Our goal at American Shoring Inc. is not only to be the best Trench Shoring Sales/Rental Company in the Industry, but to share our knowledge of the industry through safety awareness training. This training is designed for all persons associated with excavation safety and confined spaces.

At American Shoring Inc., we regard employee and customer safety a priority and offer Competent Person, Confined Space and OSHA 10 and OSHA 30 classes.

An effective safety program is the key to safety awareness which promotes not only safe practices but develops a progressive and productive organization, as well as avoidance of major OSHA fines. Please contact us for the next available training date and location. Thank you in advance for considering not only the safety of your employees, but also for the gift of returning them home to their families safely.


**AMERICAN
SHORING INC.**
1.800.407.4674
www.americanshoring.com

OSHA Requirements

OSHA 29 CFR Part 1926.650-.652 Subpart P- Excavations

OSHA's excavation standard contains many different requirements as well as several appendices that can be confusing at first glance. The following information summarizes the main requirements in order to help contractors prepare the job site for OSHA inspections.

- ★ Prior to digging, the contractor shall locate and identify all underground utilities such as sewer, telephone, fuel, electric, water lines, etc. that may be encountered during the excavation.
- ★ The contractor must designate a competent person or qualified person to assess the excavation and determine that it is safe for project personnel to enter and work.
- ★ All surface encumbrances such signs, trees, fences, poles, sidewalks, etc. that create a hazard to employees must be removed or supported during the excavation.
- ★ All excavating must maintain a minimum of 10 ft. from overhead power lines 50 kV or less, with 0.4 in. of clearance added for every kV over 50.
- ★ Support systems shall be provided to ensure the stability of adjacent structures endangered by excavation operations.
- ★ If excavation is over 5 ft. deep, a protective system such as a trench shield shall be used to prevent a cave-in.
- ★ The contractor must provide a safe means of entering or exiting any excavation over 4 ft. deep.
- ★ A means of egress from a trench such as a ladder, ramp or stairway shall be located within 25 ft. of workers.
- ★ In excavations over 4 ft. in depth, the potential for the accumulation of hazardous gases or vapors must be realized.
- ★ Shielding systems shall be installed and removed in a manner that protects employees from cave-ins, structural collapses, or form being struck by any part of the support system.
- ★ Shielding systems shall be installed in a manner to restrict lateral or other hazardous movement of the shield in the event of a sudden collapse.
- ★ The bottom of the shielding system can not be positioned greater than 2 ft. above the bottom of the excavation/
- ★ Shielding systems and their components shall not be subjected to loads which they are not designed to withstand.
- ★ Shielding systems and the components shall be securely connected to prevent predictable failures.
- ★ The removed spoil shall not be stockpiled closer than 2 ft. from the excavation's edge.
- ★ Backfilling shall progress together with the removal of support systems from excavations.
- ★ Any excavation left unattended must be barricaded, fenced or otherwise protected against accidental entry by pedestrians.
- ★ Employees exposed to vehicular traffic must wear a high-visibility vest, and the excavation must be protected from traffic.
- ★ If employees must cross over an open excavation, a safe means must be provided so that the employees do not have to jump across a trench.
- ★ No workers shall enter or work in excavations where standing water is visible unless adequate protection is used.
- ★ No employee shall be permitted underneath loads handled by lifting or digging equipment.
- ★ If the competent person finds evidence of a hazardous situation that may result in a cave-in, protective system failure, a hazardous atmosphere, or other hazardous conditions, exposed employees shall be removed from the hazardous areas until necessary precautions have been taken to ensure safety.

How to Order a Trench Shield

Soil Classifications, Calculating Depth Ratings, and Sizing a Shield

Depth of cut* _____

Soil conditions* _____

Type A (25#) _____

Type B (45#) _____

Type C-60 (60#) _____

Type C-80 (80#) _____

Hydrostatic _____

**see depth certification chart*

Outside Pipe Diameter _____

(Shield should be a minimum of 12 in. wider than the pipe)

Pipe Length _____

(Shield should be 2 to 4 ft. longer than the pipe)

Bucket Width _____

(Inside shield: 12 in. less than shield)

Machine Lift Capacity _____

(1.5 times shield weight at 20 degrees radius or as a rule of thumb.

The shields weight should not exceed 60% of the machines lift capacity)

The following will explain how to determine the specifications listed above.

How to determine depth of cut:

- Slope must start 18 in or 1 1/2 ft. below the top of the Shield.

How to determine the width of a trench shield:

- Trench Shield width determined by Outside Diameter (OD) of the pipe or the OD of the excavator bucket
- Allow 6 in. of clearance on each side of pipe bell
- Shield should be a minimum of 12 in wider than the excavator bucket OD

How to determine the length of a trench shield:

- Inside length clearance of pipe is approximately 2 ft. less than the overall length of the shield
- Shield must be 2 to 4 ft. longer than the pipe

How to determine machine lift capacity:

- Lift capacity is 1.5 times the shield weight at 20 ft. radius at grade.

Calculating Depth Ratings:

- PSF ratings and depths are based on temporary loading

Lateral pressure per foot of depth:

Type "A" Soil= 25 lbs.

Type "B" Soil= 46 lbs.

Type "C-60" Soil= 60 lbs.

Type "C-80" Soil= 80 lbs.

Depth rating using shield capacity (e.g. 1200 lbs):

$1200 / 25 = 48 \text{ ft.}$

$1200 / 45 = 27 \text{ ft.}$

$1200 / 60 = 20 \text{ ft.}$

$1200 / 80 = 15 \text{ ft.}$

No soil is Type "A" if:

- It is fissured.
- It is subject to vibration.
- It has been previously disturbed.
- It is part of sloped, layered system which dips into the excavation on a slope of four horizontal to one vertical (4H:1V) or greater.
- It is subject to other factors requiring classifications as less stable.

Type "B" Soil:

- Cohesive soil with unconfined compressive strength greater than 0.5 tons per square foot (tsf) but less than 1.5 tsf.
- Granular cohesion-less soils, e.g., gravel silt, silt loam, sandy loam
- Type "A" fissured subject to vibration
- Unstable dry rock
- It is part of a sloped, layered system which dips into the excavation on a slope less steep than 4H:1V, but only if the material would otherwise be classified as Type "B"

Type "C" Soil:

- Cohesive/non-cohesive soils with unconfined compressive strength of 0.5 tsf or less
- Granular soils including gravel, sand, and loamy sand
- Submerged soil or soil from which water is freely seeping
- Submerged rock that is not stable
- Sloped, layered system which slopes into an excavation at an angle or 4H:1V, or steeper



Mighty Lite[®] Erector Series

**Available in
2', 4', 6', 8' or 10'
High Panels**

- ★ **Professional Engineer Certified**
- ★ **Constructed of 6061-T6 aluminum alloy**
- ★ **Transportable in a pickup truck, van, or ASI shoring trailer- refer to page 17**
- ★ **Unload and assemble by hand**
- ★ **Choice of heights:
2', 4', 6', 8' or 10' high panels**
- ★ **Dual purpose end posts accept either panels, screw jacks or spreaders- allowing 2, 3 or 4-sided shields using the same components**



Two sided configuration
Shown with our NiCad plated screw jacks



Three Sided Configuration
Uses same dual purpose end post for
end panels or side panels



Four sided configuration

The World's Finest
**Full Featured
Modular Shoring**



HIGH ARCH SPREADERS MEET THE CHALLENGE!

These Custom Erector Series Aluminum High Arch Shields were designed & delivered by **American Shoring Inc.** They exceeded all job site requirements and met the contractors special operation and safety needs.



**AMERICAN
SHORING INC.**

1.800.407.4674

www.americanshoring.com

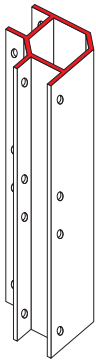
Mighty Lite Erector Series continued...

MIGHTY LITE® ERECTOR SERIES PANEL SELECTION

MODEL	HEIGHT	LENGTH	WEIGHT	APPROXIMATE DIGGING DEPTH (FT.) & SOIL TYPE			
				A	B	C	C
				25	45	60	80
MLES-22	2'	2'	30#	124	71	54	32
MLES-23	2'	3'	42#	112	64	49	29
MLES-24	2'	4'	53#	100	57	44	26
MLES-25	2'	5'	65#	96	55	42	25
MLES-26	2'	6'	77#	92	53	41	24
MLES-27	2'	7'	90#	72	42	32	19
MLES-28	2'	8'	102#	52	31	24	14
MLES-210	2'	10'	125#	36	22	17	11
MLES-212	2'	12'	150#	28	17	14	9
MLES-214	2'	14'	175#	20	13	11	7
MLES-216	2'	16'	198#	14	10	8	CUSTOM

OTHER SIZES ON REQUEST

All panels have tongue and groove construction. Solid bottom cutting edges are available as well as full length top protectors.



2 WAY "T" CORNER END POSTS

MODEL	HEIGHT	WEIGHT (EACH)
ECP-2	2'	18#
ECP-4	4'	35#
ECP-6	6'	52#
ECP-8	8'	68#
ECP-10	10'	85#



3 WAY "T" CORNER END POSTS

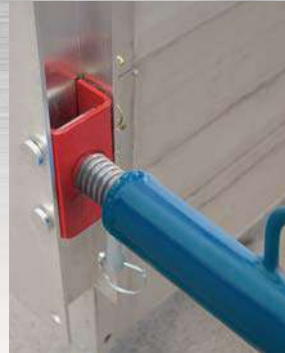
MODEL	HEIGHT	WEIGHT (EACH)
TECP-2	2'	30#
TECP-4	4'	50#
TECP-6	6'	70#
TECP-8	8'	90#
TECP-10	10'	110#
TECP-12	12'	130#



4 WAY CORNER END POSTS

MODEL	HEIGHT	WEIGHT (EACH)
4ECP-2	2'	35#
4ECP-4	4'	70#
4ECP-6	6'	90#
4ECP-8	8'	135#
4ECP-10	10'	170#
4ECP-12	12'	205#

SPREADER SELECTIONS



Adjustable NiCad
plated screw jacks

SCREW JACK SELECTION

Includes Pins & Keepers

MODEL	WIDTH	WEIGHT (EACH)
ESJ-23	24" - 36"	25#
ESJ-35	36" - 60"	38#
ESJ-57	60" - 84"	42#
ESJ-79	84" - 108"	49#

Other sizes available by request.
Threaded portion of jacks are NiCad
plated to resist corrosion.
Each strut is held in place with
(4) 5/8" pins & keepers.



ADJUSTABLE SQUARE STEEL BOX TUBING SPREADERS

MODEL	WIDTH	WEIGHT (EACH)
AST-1824	18" - 24"	30#
AST-2436	24" - 36"	35#
AST-3660	36" - 60"	52#
AST-4872	48" - 72"	68#
AST-6096	60" - 96"	82#
AST-72108	72" - 108"	95#
AST-84120	84" - 120"	115#
AST-84120	96" - 144"	130#

OTHER SIZES ON REQUEST

Each strut is held in place with
(4) 5/8" diameter pins with keepers.



STAINLESS STEEL SCREW JACK SELECTION Includes Pins & Keepers

MODEL	WIDTH	WEIGHT (EACH)
ESJ-23-SS	24" - 36"	25#
ESJ-35-SS	36" - 60"	38#
ESJ-57-SS	60" - 84"	42#
ESJ-79-SS	84" - 108"	49#

Other sizes available by request.
Each strut is held in place with
(4) 5/8" pins & keepers.

ULTRA ARCH

For use with the Erector Series and Shield Box Models

MODEL#	DESCRIPTION	WEIGHT (EACH)
UA 7248	ULTRA ARCH PAIR 72"H X 48"W	560#
ES SPACER 24	24" SPREADER SPACER	120#
ES SPACER 36	36" SPREADER SPACER	140#
ES SPACER 48	48" SPREADER SPACER	160#
ES SPACER 60	60" SPREADER SPACER	180#
ES SPACER 72	72" SPREADER SPACER	210#
ES SPACER 84	84" SPREADER SPACER	230#

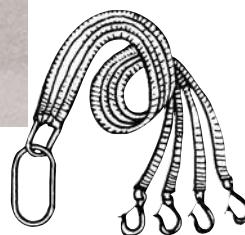
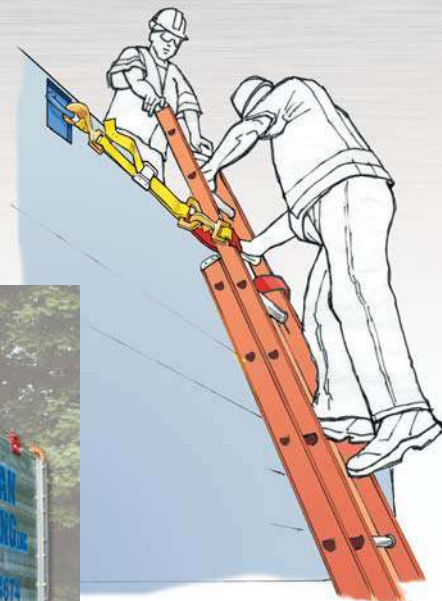


**Transportable in a
Pick-Up Truck!**

NEW! SLIP-NOT™
LADDER RETENTION SYSTEM

The First Step in Fall Prevention!

See Page 32



OPTIONAL ACCESSORIES

E.LEG	ADJUSTABLE LEG KIT
E.WK	TOP WHEEL KIT
TECP	"T" CONNECTION POSTS 2', 4', 6', 8' & 10'
ETCAP	SOLID TOP CAP
EKE	SOLID BOTTOM CUTTING EDGE
4ECP	4 WAY CONNECTION POSTS
ENS6	ERECTOR SERIES NYLON SLING- 6'
ENS8	ERECTOR SERIES NYLON SLING- 8'
ELL	LIFTING LUG

**AMERICAN
SHORING INC.**
1.800.407.4674
www.americanshoring.com

Mighty Lite® Shield Box

For Use with Rubber Tire Backhoes

Mighty Lite® Shield Box

- ★ Professional Engineer Certified
- ★ Constructed of 6061-T6 aluminum alloy
- ★ Foam fill optional
- ★ Adjustable widths
- ★ Choice of spreader systems:
 - 3.5"x 3.5" steel box tubing or
 - Pinned in place pipe spreaders (interchangeable widths)
- ★ Choice of heights:
 - 4', 6' or 8' high panels
- ★ 4 standard lengths
- ★ Available with knife-edge or flat bottom
- ★ Custom sizes available



**LIGHT WEIGHT
MANHOLE BOX**
MIGHTY LITE® MANHOLE
SHIELD BOX WITH WRAP
AROUND ENDS



MIGHTY LITE® SHIELD BOX SIDE PANEL SELECTION

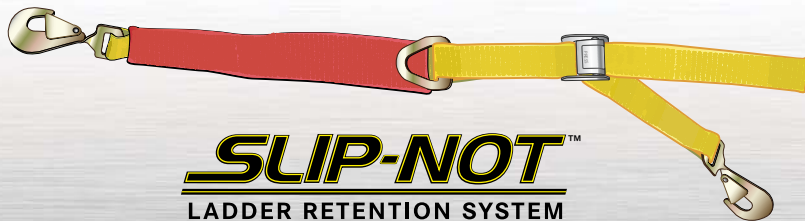
MODEL	HEIGHT	LENGTH	WEIGHT (PER SET)	APPROXIMATE DIGGING DEPTH (FT.) & SOIL TYPE			
				A 25	B 45	C 60	C 80
MLSB-66	6'	6'	725#	67	38	29	21
MLSB-68	6'	8'	905#	37	21	17	12
MLSB-610	6'	10'	1,085#	23	14	12	8
MLSB-612	6'	12'	1,275#	15	11	9	6
MLSB-86	8'	6'	945#	45	26	20	14
MLSB-88	8'	8'	1,175#	34	20	15	11
MLSB-810	8'	10'	1,415#	23	14	12	8
MLSB-812	8'	12'	1,645#	15	11	9	6

Other wall sizes available upon request



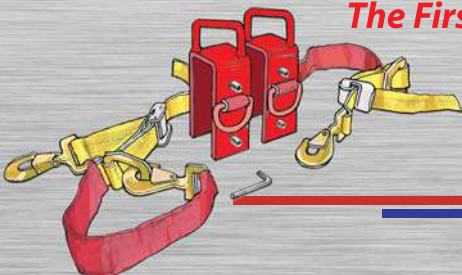
LIFTING & STACKING ACCESSORIES

MODEL	DESCRIPTION	WEIGHT
AST-LE	Lift Eyes (4) per set	25#
AST-SP	Stacking Pins (4) 12" (includes bolts)	20#
2SP	Stacking Posts - 4/set	10#
AST-SAB	Spreader Adapter Brackets	100#
MNS-6	4 Leg Nylon Sling 6'	16#
MNS-8	4 Leg Nylon Sling 8'	20#



SLIP-NOT™
LADDER RETENTION SYSTEM

The First Step in Fall Prevention!
See Page 32



ADJUSTABLE SQUARE STEEL BOX TUBING SPREADERS

MODEL	WIDTH	WEIGHT (EACH)
AST-1824	18" - 24"	30#
AST-2436	24" - 36"	35#
AST-3660	36" - 60"	52#
AST-4872	48" - 72"	68#
AST-6096	60" - 96"	82#
AST-72108	72" - 108"	95#
AST-84120	84" - 120"	115#
AST-84120	96" - 144"	130#

OTHER SIZES ON REQUEST

Each strut is held in place with
(4) 5/8" diameter pins with keepers.

DRAG BARS

MODEL	SHIELD ID	WEIGHT (EACH)
DB-1824	18" to 24"	30#
DB-2436	24" to 36"	32#
DB-3660	36" to 60"	52#
DB-4872	48" to 72"	68#
DB-72108	72" to 108"	96#
DB-84108	84" to 108"	120#
DB-96144	96" to 144"	180#

OTHER SIZES ON REQUEST

ACCESSORIES / OPTIONS:

PCA	PIPE COLLAR ADAPTERS
TC	"T" CONNECTION CUT OUTS

 **AMERICAN
SHORING INC.**
1.800.407.4674
www.americanshoring.com

4" Wall Aluminum Trench Box

Light Weight Aluminum Trench Shields

- ★ Professional Engineer Certified
- ★ Constructed of 6061-T6 aluminum alloy
- ★ 4" wall thickness
- ★ Foam fill optional
- ★ Interchangeable widths:
 - 5", 6" or 8" schedule 80 pinned in place steel pipe spreaders
- ★ Choice of heights:
 - 4', 6', 8' or 10' high panels
- ★ 5 standard lengths
- ★ Reinforced tops
- ★ Heavy duty end posts
- ★ Stackable
- ★ Custom sizes available



LIGHT WEIGHT 4" WALL
ALUMINUM "ST" TRENCH BOX



5" SCHEDULE 80 PINNED ADJUSTABLE
STEEL PIPE SPREADERS





STACK BOXES TO REQUIRED DEPTH

MPS 5" SCHEDULE 80 PIPE SPREADERS

LOOSE INTERCHANGEABLE

MODEL	INSIDE WIDTH	WEIGHT
MPS-24	24"	230#
MPS-30	30"	275#
MPS-36	36"	320#
MPS-42	42"	360#
MPS-48	48"	400#
MPS-54	54"	440#
MPS-60	60"	480#
MPS-72	72"	650#
MPS-84	84"	750#
MPS-96	96"	850#
MPS-108	108"	980#
MPS-120	120"	1025#
MPS-132	132"	1150#
MPS-144	144"	1250#

HMPS 6" SCHEDULE 80 PIPE SPREADERS

LOOSE INTERCHANGEABLE

MODEL	INSIDE WIDTH	WEIGHT
HMPS-4-24	24"	296#
HMPS-4-30	30"	352#
HMPS-4-36	36"	408#
HMPS-4-42	42"	464#
HMPS-4-48	48"	520#
HMPS-4-54	54"	576#
HMPS-4-60	60"	632#
HMPS-4-72	72"	744#
HMPS-4-84	84"	856#
HMPS-4-96	96"	968#
HMPS-4-108	108"	1080#
HMPS-4-120	120"	1192#
HMPS-4-132	132"	1304#
HMPS-4-144	144"	1416#

HPS 8" SCHEDULE 80 PIPE SPREADERS

LOOSE INTERCHANGEABLE

MODEL	INSIDE WIDTH	WEIGHT
HPS-24	24"	480#
HPS-30	30"	560#
HPS-36	36"	650#
HPS-42	42"	750#
HPS-48	48"	840#
HPS-54	54"	925#
HPS-60	60"	1010#
HPS-72	72"	1180#
HPS-84	84"	1350#
HPS-96	96"	1520#
HPS-108	108"	1700#
HPS-120	120"	1880#
HPS-132	132"	2050#
HPS-144	144"	2230#

4" ALUMINUM "ST" (STACKED TUBULAR DESIGN)

MODEL	HEIGHT	LENGTH	WEIGHT	APPROXIMATE DIGGING DEPTH (FT.) & SOIL TYPE			
				A 25	B 45	C 60	C 80
4AST-68	6'	8'	1450#	117	66	50	37
4AST-610	6'	10'	1725#	72	41	31	23
4AST-612	6'	12'	2050#	49	28	21	16
4AST-614	6'	14'	2300#	35	20	16	10
4AST-616	6'	16'	2550#	26	15	12	9
4AST-88	8'	8'	1735#	69	39	30	23
4AST-810	8'	10'	2195#	55	31	24	18
4AST-812	8'	12'	2630#	45	26	20	15
4AST-814	8'	14'	2935#	35	20	16	11
4AST-816	8'	16'	3200#	30	18	14	10



5" Wall Aluminum Trench Box

5" Medium Duty Aluminum Trench Shield

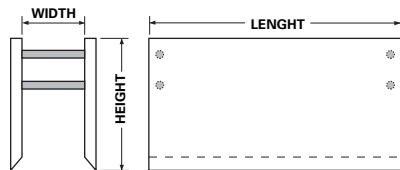
- ★ Professional Engineer Certified
- ★ Constructed of 6061-T6 aluminum alloy
- ★ 5" wall thickness standard (other wall thicknesses available)
- ★ Utilizes 4" schedule 40 or 5" schedule 80 pinned in place steel pipe spreaders
- ★ Interchangeable widths
- ★ Lifting lugs built into sidewalls
- ★ Stackable
- ★ External hardwood top protection

MEDIUM DUTY SINGLE WALL ALUMINUM TRENCH BOX WITH 5" THICKNESS

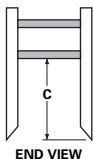


Single Wall

5" ALUMINUM TRENCH- SINGLE SIDEWALL SHALLOW CUT



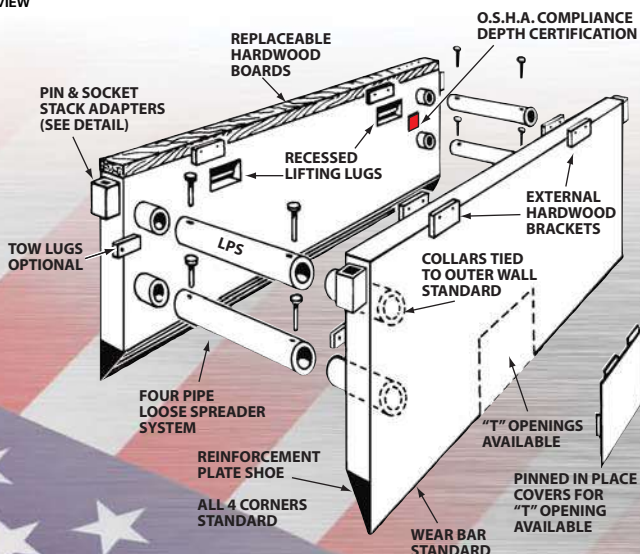
DROP BOX
PIPE CLEARANCE
BOTH ENDS FOR
REPAIR WORK



CLEARANCES

4' - 22"
6' - 40"
8' - 48"
10' - 60"

MODEL	HEIGHT	LENGTH	WEIGHT	APPROXIMATE DIGGING DEPTH (FT.) & SOIL TYPE			
				A 25	B 45	C 60	C 80
5ASW-46	4'	6'	575#	52	31	24	19
5ASW-48	4'	8'	700#	48	28	22	18
5ASW-410	4'	10'	850#	33	20	16	13
5ASW-412	4'	12'	975#	19	12	10	9
5ASW-66	6'	6'	800#	48	28	22	18
5ASW-68	6'	8'	950#	43	26	20	16
5ASW-610	6'	10'	1150#	28	17	14	12
5ASW-612	6'	12'	1375#	24	15	12	10
5ASW-86	8'	6'	975#	33	20	16	13
5ASW-88	8'	8'	1200#	28	17	14	12
5ASW-810	8'	10'	1375#	24	15	12	10
5ASW-812	8'	12'	1600#	24	15	12	10
5ASW-1010	10'	10'	1875#	33	20	16	13
5ASW-1012	10'	12'	2470#	28	17	14	12



*** PSF Ratings and depths are based on short term exposure with excavation open a period of time equal to 24 hours or less. Consult manufacturer should long term exposure be required. Depths are based on A, B, C soil types as described in OSHA's 29 CFR Part 1926 Subpart P, October 31, 1989 with Type A not exceeding 25 PSF per foot of depth, Type B not exceeding 45 PSF per foot of depth, Type C-60 not exceeding 60 PSF per foot of depth and Type C-80 not exceeding 80 PSF per foot of depth. Determine actual soil pressures and consult Manufacturers Tabulated Data prior to each use.

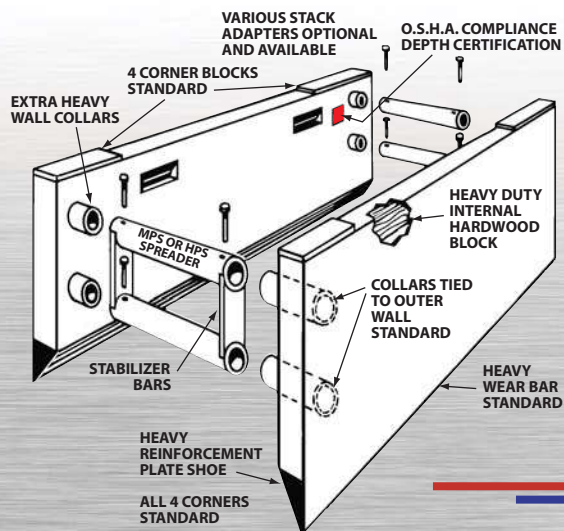


Double Wall

5" ALUMINUM TRENCH- DOUBLE SIDEWALL

DEEP CUT APPROXIMATE DIGGING DEPTH (FT.)

MODEL	HEIGHT	LENGTH	WEIGHT	SOIL TYPE			
				A 25	B 45	C 60	C 80
5ADW-46	4'	6'	700#	76	44	34	27
5ADW-48	4'	8'	900#	72	42	32	25
5ADW-410	4'	10'	1100#	57	33	26	21
5ADW-412	4'	12'	1250#	43	26	20	16
5ADW-416	4'	16'	1700#	38	23	18	15
5ADW-418	4'	18'	1900#	21	13	11	9
5ADW-420	4'	20'	2100#	16	11	9	8
5ADW-66	6'	6'	1000#	62	36	28	22
5ADW-68	6'	8'	1250#	50	30	23	18
5ADW-610	6'	10'	1500#	43	26	20	16
5ADW-612	6'	12'	1800#	36	22	17	14
5ADW-616	6'	16'	2400#	28	17	14	12
5ADW-618	6'	18'	2600#	26	16	13	11
5ADW-620	6'	20'	2800#	24	15	12	10
5ADW-86	8'	6'	1200#	60	35	27	22
5ADW-88	8'	8'	1500#	57	33	26	21
5ADW-810	8'	10'	2000#	52	31	24	19
5ADW-812	8'	12'	2250#	43	26	20	16
5ADW-816	8'	16'	3000#	36	22	17	14
5ADW-818	8'	18'	3400#	23	15	12	10
5ADW-820	8'	20'	3800#	21	13	11	9



MPS 5" SCHEDULE 80 PIPE SPREADERS

LOOSE INTERCHANGEABLE

MODEL	INSIDE WIDTH	WEIGHT
MPS-24	24"	230#
MPS-30	30"	275#
MPS-36	36"	320#
MPS-42	42"	360#
MPS-48	48"	400#
MPS-54	54"	440#
MPS-60	60"	480#
MPS-72	72"	650#
MPS-84	84"	750#
MPS-96	96"	850#
MPS-108	108"	980#
MPS-120	120"	1025#
MPS-132	132"	1150#
MPS-144	144"	1250#

HMPs 6" SCHEDULE 80 PIPE SPREADERS

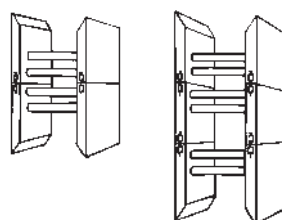
LOOSE INTERCHANGEABLE

MODEL	INSIDE WIDTH	WEIGHT
HMPs-4-24	24"	296#
HMPs-4-30	30"	352#
HMPs-4-36	36"	408#
HMPs-4-42	42"	464#
HMPs-4-48	48"	520#
HMPs-4-54	54"	576#
HMPs-4-60	60"	632#
HMPs-4-72	72"	744#
HMPs-4-84	84"	856#
HMPs-4-96	96"	968#
HMPs-4-108	108"	1080#
HMPs-4-120	120"	1192#
HMPs-4-132	132"	1304#
HMPs-4-144	144"	1416#

HPS 8" SCHEDULE 80 PIPE SPREADERS

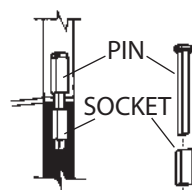
LOOSE INTERCHANGEABLE

MODEL	INSIDE WIDTH	WEIGHT
HPS-24	24"	480#
HPS-30	30"	560#
HPS-36	36"	650#
HPS-42	42"	750#
HPS-48	48"	840#
HPS-54	54"	925#
HPS-60	60"	1010#
HPS-72	72"	1180#
HPS-84	84"	1350#
HPS-96	96"	1520#
HPS-108	108"	1700#
HPS-120	120"	1880#
HPS-132	132"	2050#
HPS-144	144"	2230#



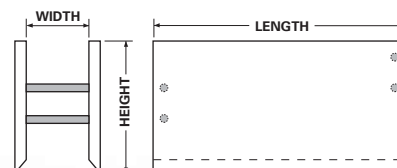
SIDEWALL STACKING KIT

OPTIONAL SIDE WALL STACKING DETAIL



SOCKET AND PIN SET
(INCLUDES 8 SOCKETS AND 4 PINS)

ASK US ABOUT REMOVABLE END CLOSURES TO MAKE 3 OR 4 SIDED UNITS



DRAG BOX
FRONT SPREADER
LOWERED FOR BUCKET
CLEARANCE
(FOR PIPE INSTALLATION)



AMERICAN SHORING INC.
1.800.407.4674
www.americanshoring.com

8" Wall Aluminum Trench Box

8" Heavy Duty Aluminum Trench Shields

- ★ Professional Engineer Certified
- ★ High quality construction
- ★ 8" wall thickness standard (other wall thicknesses available)
- ★ Lifting lugs standard
- ★ Stackable
- ★ Reinforced cutting edges

8" ALUMINUM TRENCH BOX HEAVY DUTY DOUBLEWALL

MODEL	HEIGHT	LENGTH	WEIGHT	APPROXIMATE DIGGING DEPTH (FT.) & SOIL TYPE			
				A 25	B 45	C 60	C 80
8ADW612	6'	12'	2,500#	66	38	30	23
8ADW616	6'	16'	3,150#	48	28	22	18
8ADW620	6'	20'	3,800#	31	19	15	12
8ADW624	6'	24'	4,500#	24	15	12	10
8ADW812	8'	12'	3,150#	64	37	29	23
8ADW816	8'	16'	3,950#	48	28	22	18
8ADW820	8'	20'	4,800#	32	20	16	13
8ADW824	8'	24'	5,600#	24	15	12	10



8" SCHEDULE 80 PIPE SPREADERS

4 Pipe System
Prices include vertical
stabilizer bars ; attaching pins
& keepers

MODEL	WIDTH	WEIGHT
HPS-4-24	24"	480
HPS-4-30	30"	560
HPS-4-36	36"	650
HPS-4-42	42"	750
HPS-4-48	48"	840
HPS-4-54	54"	925
HPS-4-60	60"	1010
HPS-4-72	72"	1180
HPS-4-84	84"	1350
HPS-4-96	96"	1525
HPS-4-108	108"	1700
HPS-4-120	120"	1880
HPS-4-132	132"	2050
HPS-4-144	144"	2230



*** PSF Ratings and depths are based on short term exposure with excavation open a period of time equal to 24 hours or less. Consult manufacturer should long term exposure be required. Depths are based on A, B, C soil types are described in OSHA's 29 CFR Part 1926 Subpart P, October 31, 1989 with Type A not exceeding 25 PSF per foot of depth. Type B not exceeding 45 PSF per foot of depth. Type C-60 not exceeding 60 PSF per foot of depth and Type C-80 not exceeding 80 PSF per foot of depth. Determine actual soil pressures and consult Manufacturers Tabulated Data prior to each use.

Custom Shoring Trailers

Open or Closed Trailer Designs are Custom Made to Fit for Convenience, Organization and Security

- ★ **Neatly stack Mighty Lite® Hydraulic Shoring, pumps, tools and components**
- ★ **Ease of inventory control**
- ★ **Direct access to all pieces**
- ★ **All shelves, racking and accessories are custom made to fit to prevent shifting during transportation**
- ★ **Ability to lock pieces in place for security and theft prevention**
- ★ **Store pins, keepers and parts in custom fitted tool boxes**

**CLOSED TRAILER-
INSIDE VIEW**



CLOSED TRAILER



OPEN TRAILER



**AMERICAN
SHORING INC.**
1.800.407.4674
www.americanshoring.com

Aluminum Manhole Shields

Aluminum Manhole Shields available in 4", 6" or 8" wall thickness

- ★ Professional Engineer Certified
- ★ 6061-T6 aluminum alloy construction
- ★ 4", 6" or 8" wall thickness standard (other wall thicknesses available)
- ★ Choice of single wall or double wall construction
- ★ Utilizes pinned in pipe spreaders
- ★ Lifting lugs standard
- ★ Hardwood filled top
- ★ Stackable



**ALUMINUM SINGLEWALL WRAP AROUND
MANHOLE SHIELD**
WITH BOLTED AND PINNED IN PLACE SPREADERS

**ALUMINUM AST
MANHOLE BOX WITH
WRAP AROUND ENDS**



4" SINGLEWALL MANHOLE WITH OPEN ENDS

APPROXIMATE DIGGING DEPTH (FT.)
& SOIL TYPE

MODEL	HEIGHT	LENGTH	*PC	WEIGHT	A 25	B 45	C 60	C 80
4ASWOE88	8'	8'	48"	1150#	28	16	12	10
4ASWOE810	8'	10'	48"	1375#	24	14	11	9
4ASWOE812	8'	12'	48"	1575#	20	11	10	8

4" DOUBLEWALL MANHOLE WITH OPEN ENDS

4ADWOE88	8'	8'	48"	1800#	57	32	24	18
4ADWOE810	8'	10'	48"	2100#	50	28	21	15
4ADWOE812	8'	12'	48"	2450#	42	23	18	12
4ADWOE814	8'	14'	48"	2800#	34	19	14	10

6" SINGLEWALL MANHOLE WITH OPEN ENDS

6ASWOE88	8'	8'	48"	1400#	39	22	16	12
6ASWEO810	8'	10'	48"	1550#	23	13	11	9
6ADWEO812	8'	12'	48"	1800#	22	12	11	9
6ASWEO814	8'	14'	48"	2000#	20	11	10	8

*PC = Pipe Clearance under spreaders is approximate depending on spreader set selection to be used.

INSIDE CLEAR LENGTH IS APPROXIMATELY 2' LESS THAN OVERALL LENGTH.

4" SINGLEWALL MANHOLE WITH WRAP AROUND ENDS

APPROXIMATE DIGGING DEPTH (FT.)
& SOIL TYPE

MODEL	HEIGHT	WIDTH	LENGTH	*PC	WEIGHT	A 25	B 45	C 60	C 80
4ASWE88	8'	8'	8'	45"	2200#	33	18	14	12
4ASWE810	8'	10'	10'	45"	2600#	26	14	11	9
4ASWE812	8'	10'	12'	45"	3000#	19	10	9	8

4" DOUBLEWALL MANHOLE WITH WRAP AROUND ENDS

4ADWE88	8'	8'	8'	45"	2600#	57	32	24	18
4ADWE810	8'	10'	10'	45"	3000#	42	23	18	12
4ADWE812	8'	10'	12'	45"	3300#	28	16	12	8

*PC = Pipe Clearance under spreaders is approximate depending on spreader set selection to be used.



**ALUMINUM OPEN END
MANHOLE SHIELD
WITH PINNED IN PLACE
SPREADERS**



SPREADER SET SELECTION

MPS 5" SCHEDULE 80 PIPE 4- PIPE SPREADER SYSTEM

MODEL	WIDTH	WEIGHT
MPS-24M	24"	230#
MPS-30M	30"	275#
MPS-36M	36"	320#
MPS-42M	42"	360#
MPS-48M	48"	400#
MPS-54M	54"	440#
MPS-60M	60"	480#
MPS-72M	72"	650#
MPS-84M	84"	750#
MPS-96M	96"	850#
MPS-108M	108"	940#
MPS-120M	120"	1025#
MPS-144M	144"	1250#

HPS 8" SCHEDULE 80 PIPE 4- PIPE SPREADER SYSTEM

MODEL	WIDTH	WEIGHT
HPS-24M	24"	500#
HPS-30M	30"	600#
HPS-36M	36"	700#
HPS-42M	42"	775#
HPS-48M	48"	850#
HPS-54M	54"	1000#
HPS-60M	60"	1050#
HPS-72M	72"	1250#
HPS-84M	84"	1475#
HPS-96M	96"	1650#
HPS-108M	108"	1850#
HPS-120M	120"	2000#
HPS-144M	144"	2250#


**AMERICAN
SHORING INC.**
1.800.407.4674
www.americanshoring.com

Aluminum Slide Rail™

***Our newest innovation-
Aluminum Slide Rail™
allows installation with
light rubber tire backhoes***

Yet, this system provides the shoring capabilities that is needed using our high strength **STRIKE PLATE™** panel technology.

In the field, it's performance retains the same modular features as our diverse steel **Slide Rail / Rolling Strut™ System**.



ALLOWABLE MOMENT- FT. LBS. 50, 820

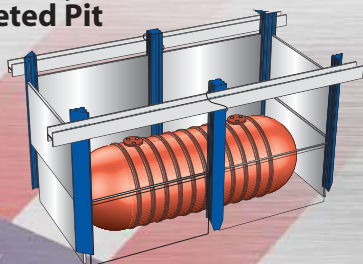
MODEL	LENGTH (FT.)	CAP. (PSF)	A	B	C1 (50)	C2 (65)	C3 (80)
ASP 6.56	6.56	3442	496	276	259	195	158
ASP 8.20	8.20	2754	318	176	166	125	101
ASP 9.84	9.84	2295	221	123	115	87	70
ASP 11.56	11.56	1967	162	90	84	64	52
ASP 13.12	13.12	1721	124	69	65	49	39
ASP 14.76	14.76	1528	98	54	51	38	31
ASP 16.48	16.48	1370	79	44	41	31	25
ASP 18.04	18.04	1252	66	36	34	26	20
ASP 19.6	19.685	1177	59	32	30	23	18
ASP 20.50	20.50	1102	51	28	26	20	16

***Our Slide Rail System with Rolling Struts may
be used in most excavating applications.***

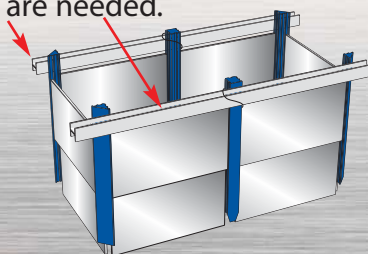


MORE CONFIGURATIONS

**Two Bay
Sheeted Pit**

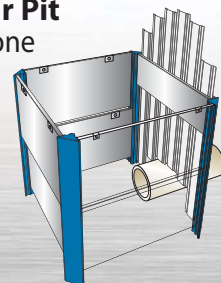


Walers are used for side support when clear span requirements are needed.



***This design provides more pipe
clearance than any other system.***

**Small Rectangular Pit
with sheeting on one
(or both) ends**



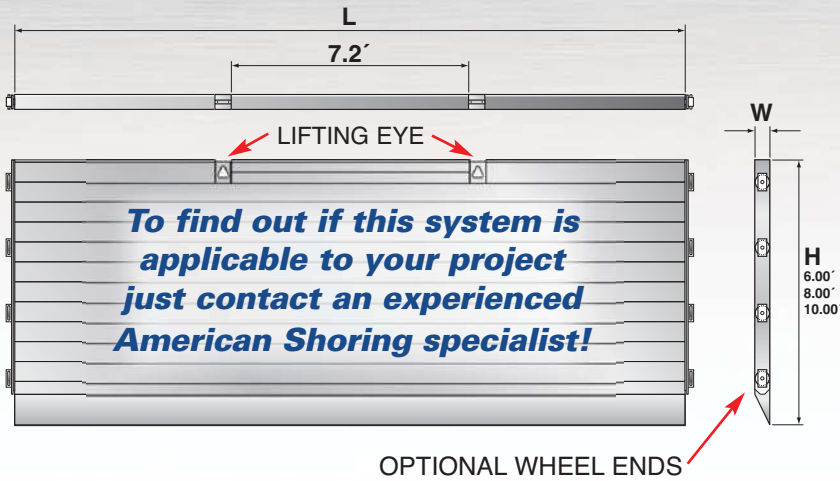
***Telescoping step down
systems using 90° corner
posts makes it easy!***

AVENGER SERIES

Featuring

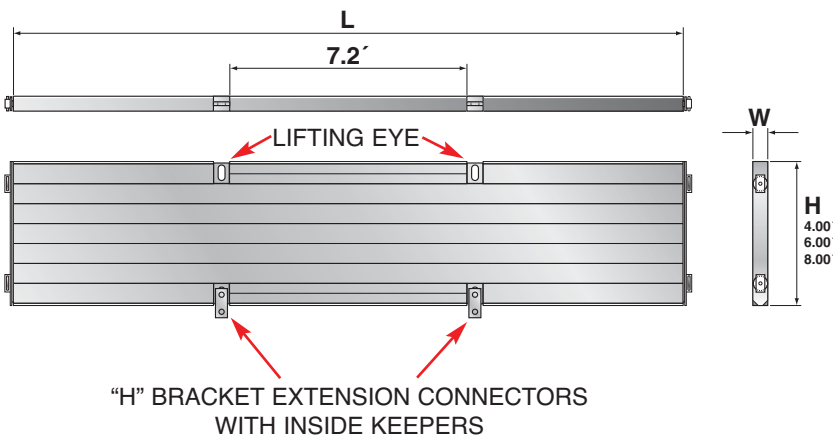
STRIKE PLATE™ TECHNOLOGY

**STRIKE PLATE™ with new
"Cutting Edge" panel
technology, withstands
forces applied from all
directions!**

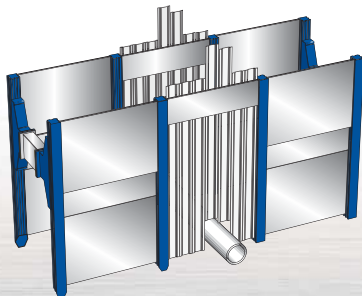


Proven high strength and light weight, the design features provide tight shoring, safety and containment with ease of handling. Optional Wheel Ends add to the already time and cost saving benefits.

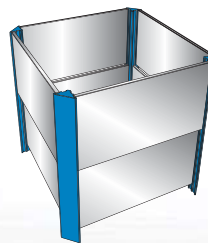
Extension panels work efficiently to increase your pit depth and provide an advantage in step by step procedures.



Utilizing pins, fast and easy connecting "H" brackets allow for safe, secure handling of panels without special tools.



Linear Tight Shoring
System utilizing in line
Utility Crossing Frame



Small Rectangular Pit
closed all four sides


**AMERICAN
SHORING INC.**
1.800.407.4674
www.americanshoring.com

Folding Gas Tap Box

- ★ **Professional Engineer Certified**
- ★ **Light weight aluminum construction**
- ★ **Foam fill (optional)**
- ★ **Standard unit weighs only 175 pounds**
- ★ **Assemble and install with man power only**
- ★ **Folding feature allows for easy storage in a crowded utility van**
- ★ **Carrying bars double as "hangers" keeping box flush with top of trench**
- ★ **Sheeting panels extend below bottom of box to increase depth**
- ★ **Standard box yields 42" x 42" clear opening (60" x 60" is also available)**
- ★ **Working depth of 6.5 feet deep in "C" soil with sheeting panels fully extended**
- ★ **Custom sizes available**

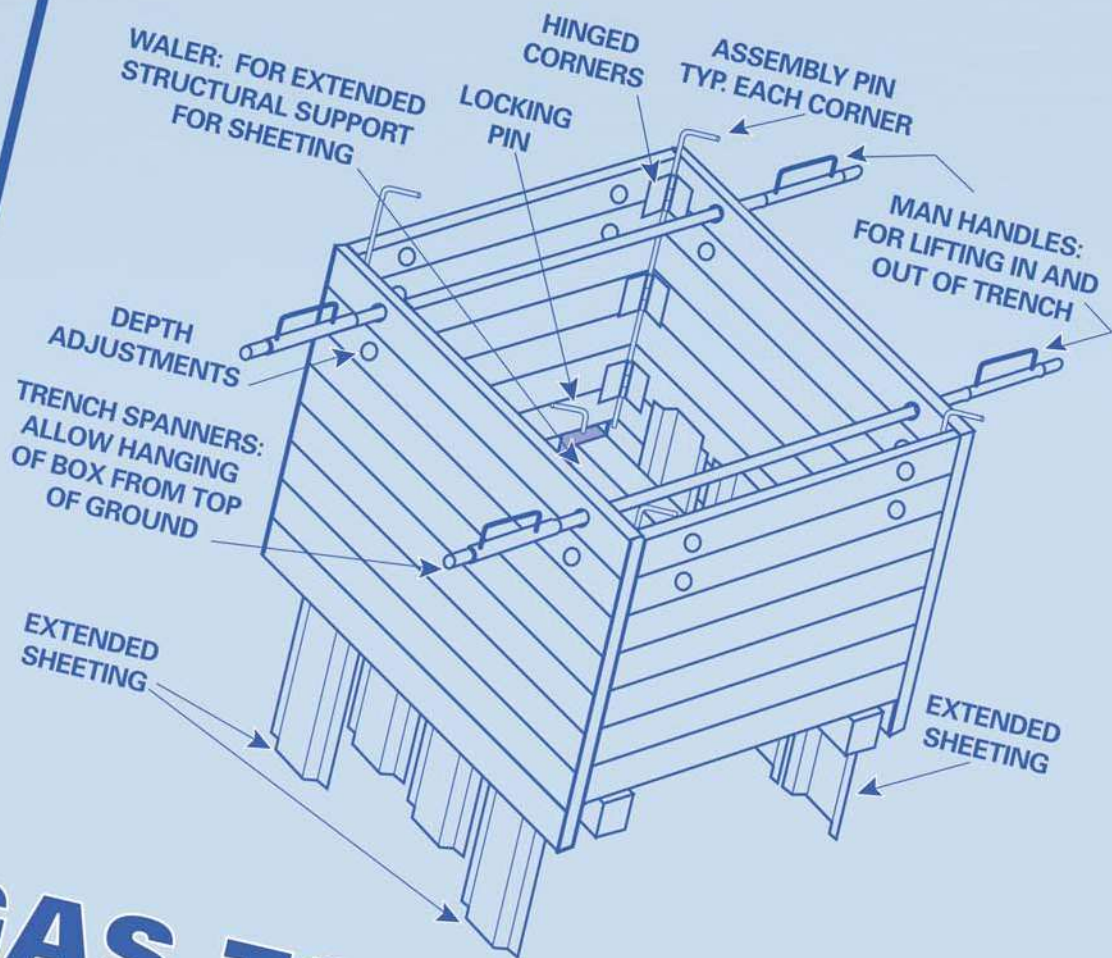


PINNED CORNERS ALLOW SIDES TO FOLD OUT FOR QUICK ASSEMBLY AND FOLD IN FOR STORAGE



MODEL	HEIGHT	WIDTH	LENGTH	WEIGHT
GT42	32"	42"	42"	175
GT60	32"	60"	60"	265

A Non-Folding, One Piece Aluminum Sheeting Frame is Available!



GAS TAP BOX



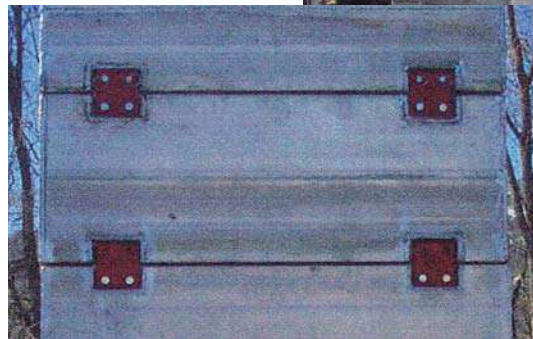
**For Water Tap Boxes
See Page 25**

**AMERICAN
SHORING INC.**
1.800.407.4674
www.americanshoring.com

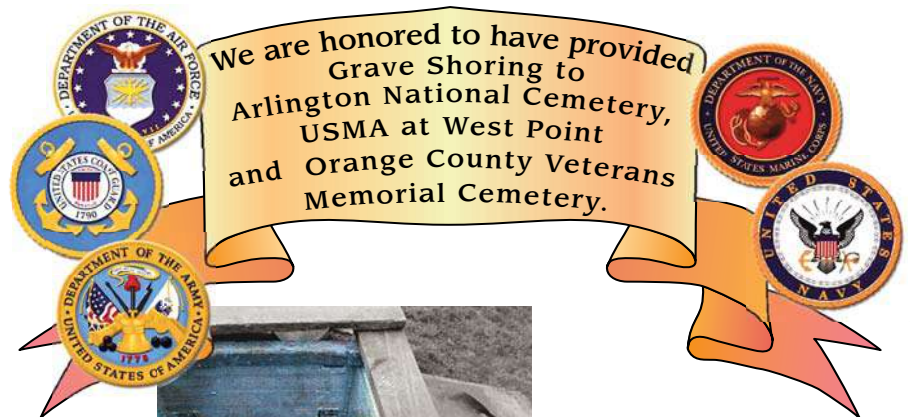
Grave Shoring

Grave shoring generally consists of modular units utilizing strong yet light weight aluminum for the shoring of graves and small excavations. Easy to install and extract, is easily transportable, and yet combines simplicity with durability and efficiency of operation.

- ★ Professional Engineer Certified
- ★ Constructed of light weight aluminum
- ★ Flush inside and out
- ★ Easy install and extract
- ★ Knocks down to a small package-fits easily into a pick-up truck
- ★ Custom sizes available
- ★ Foam filled



STACKING SECTIONS FOR REQUIRED DEPTH. TOP PROTECTION UNIT SHOWN ABOVE.



BUILT TO ACCOMMODATE ANY VAULT SIZE

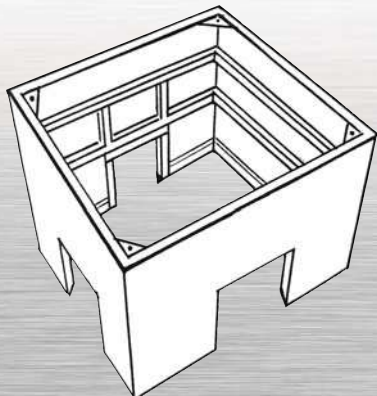


Water Tap Boxes



This Water Tap Box features 24" x 24" cutouts with optional doors on all four sides allowing clearance for access to service lines. This Water Tap Box is a single-wall design constructed with steel. The design provides a lightweight unit for easy handling by small equipment. Lifting holes on each corner allows easy loading and unloading. Additional stacking units are available to increase protection for deeper service lines.

- ★ **Professional Engineer Certified**
- ★ **Cutouts with optional sliding doors**
- ★ **Allows clearance for access to service lines**
- ★ **Lifting holes provided**
- ★ **Stackable**
- ★ **Custom sizes available**



**Available in
Light Weight Steel or
Ultra Light Aluminum**

3" STEEL WATER TAP BOX (FOUR-SIDED SINGLE WALL)

MODEL	SIZE			WEIGHT (LBS)	SHIELD CAP (PSF) TYPE C SOIL	MAXIMUM DEPTH-FT.			
	H	L	W			A	B	C-60	C-80
SWT-666	6'	6'	6'	2150	1020	34	21	17	13
SWT-646	6'	4'	6'	2025	1020	34	21	17	13
SWT-466	4'	6'	6'	1950	1140	38	24	19	14
SWT-446	4'	4'	6'	1925	1140	38	24	19	14

3" STEEL STACKING UNITS FOR WATER TAP BOX

MODEL	SIZE			WEIGHT (LBS)	SHIELD CAP (PSF) TYPE C SOIL	MAXIMUM DEPTH-FT.			
	H	L	W			A	B	C-60	C-80
SWTX-466	4'	6'	6'	1950	900	34	20	15	11
SWTX-446	4'	4'	6'	1925	900	34	20	15	11
SWTX-266	2'	6'	6'	1200	900	34	20	15	11
SWTX-246	2'	4'	6'	1170	900	34	20	15	11

3" ALUMINUM WATER TAP BOX (FOUR-SIDED SINGLE WALL)

MODEL	SIZE			WEIGHT (LBS)	SHIELD CAP (PSF) TYPE C SOIL	MAXIMUM DEPTH-FT.			
	H	L	W			A	B	C-60	C-80
AWT-666	6'	6'	6'	1400	900	34	20	15	11
AWT-646	6'	4'	6'	1300	900	34	20	15	11
AWT-466	4'	6'	6'	1250	1020	34	21	17	13
AWT-446	4'	4'	6'	1300	1020	34	21	17	13

3" ALUMINUM STACKING UNITS FOR WATER BOXES

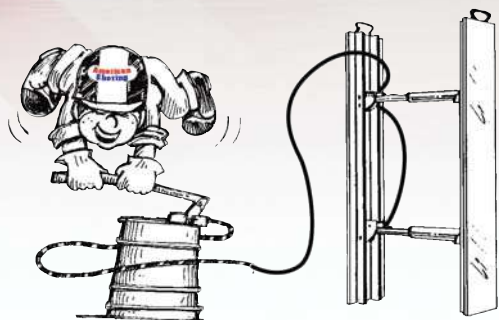
MODEL	SIZE			WEIGHT (LBS)	SHIELD CAP (PSF) TYPE C SOIL	MAXIMUM DEPTH-FT.			
	H	L	W			A	B	C-60	C-80
AWTX-466	4'	6'	6'	1300	780	29	17	13	10
AWTX-446	4'	4'	6'	1250	780	29	17	13	10
AWTX-266	2'	6'	6'	800	780	29	17	13	10
AWTX-246	2'	4'	6'	785	780	29	17	13	10



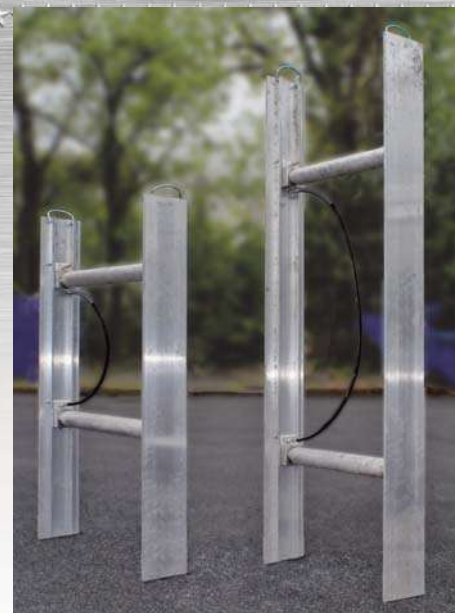

**AMERICAN
SHORING INC.**
1.800.407.4674
www.americanshoring.com

Hydraulic Shoring

Standard Vertical Shores

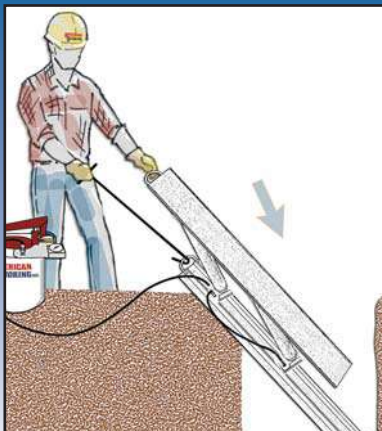


Pump with gauge, valve, hose and quick disconnect fittings. Pump's gauge regulated pressure ensures evenly applied loads. Wire braided hoses are protected by spring guards.

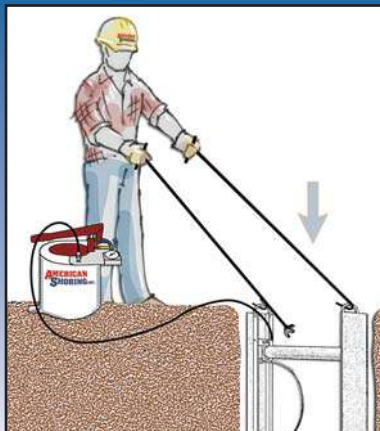


Installation and Removal from Above Ground

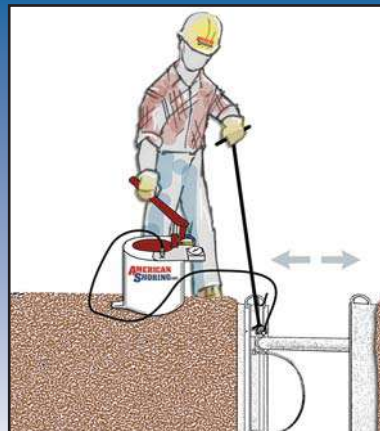
INSTALLATION



Connect hydraulic hose line to fitting. Position shore at edge of trench.

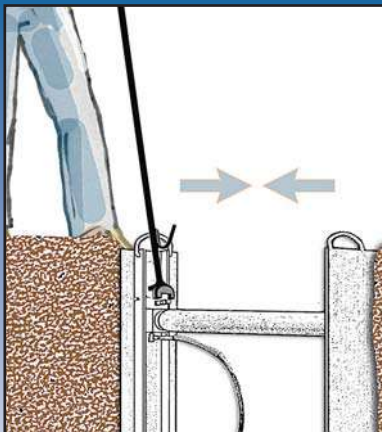


Lower shore into trench per O.S.H.A. requirements. Use release tool nearest to you and removal hook on far side.

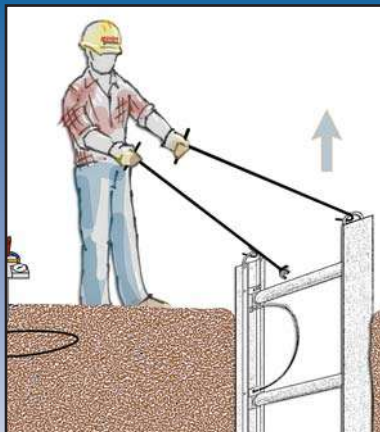


Pump to minimum pressure of 750 psi. Disconnect hose from fitting using the release tool.

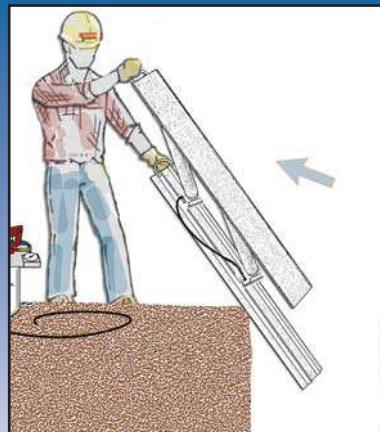
REMOVAL



Release the shoring fluid at fitting using the release tool.



Remove the shoring assembly from trench using both release and removal hook.



Complete hydraulic shore assembly folds flat for portability to next location. Always keep fingers clear of pivot pump.

STANDARD VERTICAL SHORE WITH 2" CYLINDER

MODEL	DESCRIPTION	CYL RANGE (MIN-MAX)	WEIGHT
1.5' Vertical Shore Complete			
2.1 ASV-01.5-17-27-HB	1.5' Vertical Shore 17-27 HB SR	17" - 27"	21#
2.1 ASV-01.5-22-36-HB	1.5' Vertical Shore 22-36 HB SR	22" - 36"	23#
2.1 ASV-01.5-28-46-HB	1.5' Vertical Shore 28-46 HB SR	28" - 46"	25#
2.1 ASV-01.5-34-55-HB	1.5' Vertical Shore 34-55 HB SR	34" - 55"	28#
2.1 ASV-01.5-40-64-HB	1.5' Vertical Shore 40-64 HB SR	40" - 64"	30#
2.1 ASV-01.5-52-88-HB	1.5' Vertical Shore 52-88 HB SR	52" - 88"	36#

2' Vertical Shore Complete

2.1 ASV-02-17-27-HB	2' Vertical Shore 17-27 HB SR	17" - 27"	23#
2.1 ASV-02-22-36-HB	2' Vertical Shore 22-36 HB SR	22" - 36"	26#
2.1 ASV-02-28-46-HB	2' Vertical Shore 28-46 HB SR	28" - 46"	28#
2.1 ASV-02-34-55-HB	2' Vertical Shore 34-55 HB SR	34" - 55"	31#
2.1 ASV-02-40-64-HB	2' Vertical Shore 40-64 HB SR	40" - 64"	33#
2.1 ASV-02-52-88-HB	2' Vertical Shore 52-88 HB SR	52" - 88"	39#

3.5' Vertical Shore Complete

2.1 ASV-03.5-17-27-HB	3.5' Vertical Shore 17-27 HB SR	17" - 27"	44#
2.1 ASV-03.5-22-36-HB	3.5' Vertical Shore 22-36 HB SR	22" - 36"	50#
2.1 ASV-03.5-28-46-HB	3.5' Vertical Shore 28-46 HB SR	28" - 46"	55#
2.1 ASV-03.5-34-55-HB	3.5' Vertical Shore 34-55 HB SR	34" - 55"	60#
2.1 ASV-03.5-40-64-HB	3.5' Vertical Shore 40-64 HB SR	40" - 64"	68#
2.1 ASV-03.5-52-88-HB	3.5' Vertical Shore 52-88 HB SR	52" - 88"	77#

5' Vertical Shore Complete

2.1 ASV-05-17-27-HB	5' Vertical Shore 17-27 HB SR	17" - 27"	55#
2.1 ASV-05-22-36-HB	5' Vertical Shore 22-36 HB SR	22" - 36"	60#
2.1 ASV-05-28-46-HB	5' Vertical Shore 28-46 HB SR	28" - 46"	65#
2.1 ASV-05-34-55-HB	5' Vertical Shore 34-55 HB SR	34" - 55"	70#
2.1 ASV-05-40-64-HB	5' Vertical Shore 40-64 HB SR	40" - 64"	77#
2.1 ASV-05-52-88-HB	5' Vertical Shore 52-88 HB SR	52" - 88"	87#

7' Vertical Shore Complete

2.1 ASV-07-17-27-HB	7' Vertical Shore 17-27 HB SR	17" - 27"	65#
2.1 ASV-07-22-36-HB	7' Vertical Shore 22-36 HB SR	22" - 36"	70#
2.1 ASV-07-28-46-HB	7' Vertical Shore 28-46 HB SR	28" - 46"	75#
2.1 ASV-07-34-55-HB	7' Vertical Shore 34-55 HB SR	34" - 55"	80#
2.1 ASV-07-40-64-HB	7' Vertical Shore 40-64 HB SR	40" - 64"	89#
2.1 ASV-07-52-88-HB	7' Vertical Shore 52-88 HB SR	52" - 88"	97#

Hollow Rod Available Upon Request At No Additional Charge

RELEASE TOOL- permits above trench release of quick disconnect and used to release hydraulic fluid when removing shore from trench.



REMOVE TOOL- Use with pump and release tool to install and remove shores. Release tool and removal hook both available in 30", 48" and 96" lengths.

ACCESSORIES

MODEL	DESCRIPTION	WEIGHT
AS-RELEASE TOOL-30	30" Release Tool	5#
AS-REMOVAL TOOL-30	30" Removal Hook	3#
AS-RELEASE TOOL-48	48" Release Tool	7#
AS-REMOVAL TOOL-48	48" Removal Hook	5#
AS-RELEASE TOOL-96	96" Release Tool	13#
AS-REMOVAL TOOL-96	96" Removal Hook	10#



HYDRAULIC PUMPS

MODEL	DESCRIPTION
A-1000	HYDRAULIC PUMP- STEEL

HIGH PRESSURE HOSES

MODEL	DESCRIPTION
AS-H-37	SHORT HOSE FOR 37" OR 39"
AS-H5-9	LONG HOSE 59"

HYDRAULIC PUMPS- PARTS

MODEL	DESCRIPTION
AS-HP-1	Bushing 3/8" X 1/4"
AS-HP-2 1/4"	Check Valve
AS-HP-3	Brass Cross
AS-HP-4	Crimp On Hose Ends
AS-HP-5 1/4"	Turn Valve
AS-HP-6	Female Disconnect
AS-HP-7	Brass Hose Barb
AS-HP-11	90 Degree Elbow (Brass)
AS-HP-12	Plunger & Rod
AS-HP-13	Bracket Cover
AS-HP-14	Tube Assembly
AS-HP-15	Tube
AS-HP-16	Lever
AS-HP-17	Brass Female
AS-HP-18	Air water hose red PVC
AS-HP-19	Push lock barb male pipe
AS-HP-20	Push lock barb female pipe
AS-HP-21	Tube nut brass..
AS-HP-22	Tube Nut
AS-HP-23	90 Degree Female Elbow
AS-HP-24	Bulk Head Male Connector W/LN
AS-HP-31	Pump Container
AS-HP-GASKET	Gasket
AS-HP-PLATE	Pump Can Face Plate
AS-HP-Pump	Assembly Pump Assembly
AS-HP-RK	Pump Repair Kit
AS-GAUGE	Pump Gauge

 **AMERICAN SHORING INC.**
1.800.407.4674
www.americanshoring.com

Heavy Duty Hydraulic Vertical Shores with 2" Cylinders



HYDRAULIC PUMPS

MODEL	DESCRIPTION
AS-1000	HYDRAULIC PUMP- STEEL

HIGH PRESSURE HOSES

MODEL	DESCRIPTION
AS-H-37	SHORT HOSE FOR 37" OR 39"
AS-H-59	LONG HOSE 59"

ACCESSORIES

MODEL	DESCRIPTION	WEIGHT
AS-RELEASE TOOL-30	30" Release Tool	5#
AS-REMOVAL TOOL-30	30" Removal Hook	3#
AS-RELEASE TOOL-48	48" Release Tool	7#
AS-REMOVAL TOOL-48	48" Removal Hook	5#
AS-RELEASE TOOL-96	96" Release Tool	13#
AS-REMOVAL TOOL-96	96" Removal Hook	10#

HEAVY DUTY VERTICAL SHORE WITH 2" CYLINDER

MODEL	DESCRIPTION	CYL RANGE (MIN-MAX)	WEIGHT
1.5' Vertical Shore Complete			
2.3 AVH-1.5-27	1.5' Rails w/ 1 Cylinders	17" - 27"	27#
2.3 AVH-1.5-36	1.5' Rails w/ 1 Cylinders	22" - 36"	29#
2.3 AVH-1.5-46	1.5' Rails w/ 1 Cylinders	28" - 46"	34#
2.3 AVH-1.5-55	1.5' Rails w/ 1 Cylinders	34" - 55"	42#
2.3 AVH-1.5-64	1.5' Rails w/ 1 Cylinders	40" - 64"	47#
2.3 AVH-1.5-88	1.5' Rails w/ 1 Cylinders	52" - 88"	55#
3.5' Vertical Shore Complete			
2.3 AVH-3.5-27	3.5' Rails w/ 2 Cylinders	17" - 27"	43#
2.3 AVH-3.5-36	3.5' Rails w/ 2 Cylinders	22" - 36"	59#
2.3 AVH-3.5-46	3.5' Rails w/ 2 Cylinders	28" - 46"	70#
2.3 AVH-3.5-55	3.5' Rails w/ 2 Cylinders	34" - 55"	82#
2.3 AVH-3.5-64	3.5' Rails w/ 2 Cylinders	40" - 64"	92#
2.3 AVH-3.5-88	3.5' Rails w/ 2 Cylinders	52" - 88"	104#
5' Vertical Shore Complete			
2.3 AVH-5-27	5' Rails w/ 2 Cylinders	17" - 27"	55#
2.3 AVH-5-36	5' Rails w/ 2 Cylinders	22" - 36"	65#
2.3 AVH-5-46	5' Rails w/ 2 Cylinders	28" - 46"	74#
2.3 AVH-5-55	5' Rails w/ 2 Cylinders	34" - 55"	86#
2.3 AVH-5-64	5' Rails w/ 2 Cylinders	40" - 64"	92#
2.3 AVH-5-88	5' Rails w/ 2 Cylinders	52" - 88"	110#
7' Vertical Shore Complete			
2.3 AVH-7-27	7' Rails w/ 2 Cylinders	17" - 27"	43#
2.3 AVH-7-36	7' Rails w/ 2 Cylinders	22" - 36"	110#
2.3 AVH-7-46	7' Rails w/ 2 Cylinders	28" - 46"	70#
2.3 AVH-7-55	7' Rails w/ 2 Cylinders	34" - 55"	86#
2.3 AVH-7-64	7' Rails w/ 2 Cylinders	40" - 64"	92#
2.3 AVH-7-88	7' Rails w/ 2 Cylinders	52" - 88"	110#
8' Vertical Shore Complete			
2.3 AVH-8-27	8' Rails w/ 2 Cylinders	17" - 27"	90#
2.3 AVH-8-36	8' Rails w/ 2 Cylinders	22" - 36"	94#
2.3 AVH-8-46	8' Rails w/ 2 Cylinders	28" - 46"	98#
2.3 AVH-8-55	8' Rails w/ 2 Cylinders	34" - 55"	101#
2.3 AVH-8-64	8' Rails w/ 2 Cylinders	40" - 64"	110#
2.3 AVH-8-88	8' Rails w/ 2 Cylinders	52" - 88"	118#
12' Vertical Shore Complete			
2.3 AVH-12-27	12' Rails w/ 3 Cylinders	17" - 27"	132#
2.3 AVH-12-36	12' Rails w/ 3 Cylinders	22" - 36"	138#
2.3 AVH-12-46	12' Rails w/ 3 Cylinders	28" - 46"	147#
2.3 AVH-12-55	12' Rails w/ 3 Cylinders	34" - 55"	152#
2.3 AVH-12-64	12' Rails w/ 3 Cylinders	40" - 64"	162#
2.3 AVH-12-88	12' Rails w/ 3 Cylinders	52" - 88"	177#
16' Vertical Shore Complete			
2.3 AVH-16-27	16' Rails w/ 4 Cylinders	17" - 27"	174#
2.3 AVH-16-36	16' Rails w/ 4 Cylinders	22" - 36"	185#
2.3 AVH-16-46	16' Rails w/ 4 Cylinders	28" - 46"	196#
2.3 AVH-16-55	16' Rails w/ 4 Cylinders	34" - 55"	203#
2.3 AVH-16-64	16' Rails w/ 4 Cylinders	40" - 64"	216#
2.3 AVH-16-88	16' Rails w/ 4 Cylinders	52" - 88"	235#

Note: Reduce restoration costs, fewer machine cycles, less fuel, fast and efficient installation and removal increases productivity.

Other Hydraulic Systems

High Clearance System



High Clearance Shore



Fin Form Plywood- Protected edges and smooth surfaces allow these panels a longer service life

HIGH CLEARANCE SYSTEM

MODEL	DESCRIPTION	CYL RANGE (MIN-MAX)
6.5 AS-HC-8-17-27	8' High Clearance 17-27	17" - 27"
6.5 AS-HC-8-22-36	8' High Clearance 22-36	22" - 36"
6.5 AS-HC-8-28-46	8' High Clearance 28-46	28" - 46"
6.5 AS-HC-8-34-55	8' High Clearance 34-55	34" - 55"
6.5 AS-HC-8-40-64	8' High Clearance 40-64	40" - 64"
6.5 AS-HC-8-52-88	8' High Clearance 52-88	52" - 88"
6.5 AS-HC-10-17-27	10' High Clearance 17-27	17" - 27"
6.5 AS-HC-10-22-36	10' High Clearance 22-36	22" - 36"
6.5 AS-HC-10-28-46	10' High Clearance 28-46	28" - 46"
6.5 AS-HC-10-34-55	10' High Clearance 34-55	34" - 55"
6.5 AS-HC-10-40-64	10' High Clearance 40-64	40" - 64"
6.5 AS-HC-10-52-88	10' High Clearance 52-88	52" - 88"
6.5 AS-HC-12-17-27	12' High Clearance 17-27	17" - 27"
6.5 AS-HC-12-28-46	12' High Clearance 28-46	28" - 46"
6.5 AS-HC-12-52-88	12' High Clearance 52-88	52" - 88"
MODEL	DESCRIPTION	
6.3 AS-HDW-1	Heavy Duty Waler Handle W/Bolt	
6.3 AS-WRH-HARDWARE	HCS Hardware	
6.7 AS-HC-HANDLE	High Clearance Handle	



High Clearance Shore- far right-
Showing differences from standard shoring


AMERICAN SHORING INC.
1.800.407.4674
www.americanshoring.com

Plywood Shores



PLYWOOD SHORES

MODEL	DESCRIPTION
3.1 AS-VSHD-PLY-6	Plywood Shores 6'
3.1 AS-VSHD-PLY-8	Plywood Shores 8'
3.1 AS-VSHD-PLY-4	Plywood Shores 4'
3.1 AS-VSHD-PLY-10	Plywood Shores 10'
3.1 AS-VSHD-PLY-12	Plywood Shores 12'
3.1 AS-VSHD-PLY-16	Plywood Shores 16'
3.1 AS-VSHD-PLY-20	Plywood Shores 20'



HYDRAULIC PUMPS

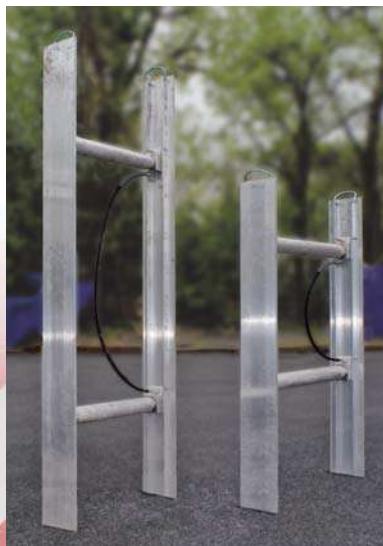
MODEL	DESCRIPTION
A-1000	HYDRAULIC PUMP- STEEL

HIGH PRESSURE HOSES

MODEL	DESCRIPTION
AS-H-37	SHORT HOSE FOR 37" OR 39"
AS-H5-9	LONG HOSE 59"

ACCESSORIES

MODEL	DESCRIPTION	WEIGHT
AS-RELEASE TOOL-30	30" Release Tool	5#
AS-REMOVAL TOOL-30	30" Removal Hook	3#
AS-RELEASE TOOL-48	48" Release Tool	7#
AS-REMOVAL TOOL-48	48" Removal Hook	5#
AS-RELEASE TOOL-96	96" Release Tool	13#
AS-REMOVAL TOOL-96	96" Removal Hook	10#

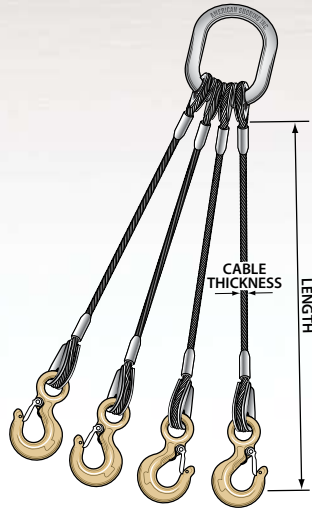


12 Foot Plywood Shore

Protective hardware
Heavy duty handle
Variable manifold capability



Parts and Accessories



4-LEG CABLE SLINGS FOR TRENCH BOX HANDLING Contact Factory for Sizing & Prices

CABLE THICKNESS AVAILABLE

- | | | |
|--------------------------------|--------------------------------|---------------------------------|
| <input type="checkbox"/> 1/4" | <input type="checkbox"/> 1/2" | <input type="checkbox"/> 7/8" |
| <input type="checkbox"/> 5/16" | <input type="checkbox"/> 9/16" | <input type="checkbox"/> 1" |
| <input type="checkbox"/> 3/8" | <input type="checkbox"/> 5/8" | <input type="checkbox"/> 1-1/8" |
| <input type="checkbox"/> 7/16" | <input type="checkbox"/> 3/4" | <input type="checkbox"/> 1-1/4" |

END PANEL KITS

MODEL	DESCRIPTION	WEIGHT
6' High End Panel Kit		
9.6 AS-EPK-06-40	End Panel Brackets(4), Tubes(3)+Shoring Sheets(3)	121#
9.6 AS-EPK-06-50	End Panel Brackets(4), Tubes(3)+Shoring Sheets(4)	149#
9.6 AS-EPK-06-59	End Panel Brackets(4), Tubes(3)+Shoring Sheets(5)	180#
9.6 AS-EPK-06-68	End Panel Brackets(4), Tubes(3)+Shoring Sheets(6)	207#
9.6 AS-EPK-06-92	End Panel Brackets(4), Tubes(3)+Shoring Sheets(8)	262#
For One End of the Shield Only		

8' High End Panel Kit		
9.8 AS-EPK-08-40	End Panel Brackets(4), Tubes(3)+Shoring Sheets(3)	139#
9.8 AS-EPK-08-50	End Panel Brackets(4), Tubes(3)+Shoring Sheets(4)	174#
9.8 AS-EPK-08-59	End Panel Brackets(4), Tubes(3)+Shoring Sheets(5)	212#
9.8 AS-EPK-08-68	End Panel Brackets(4), Tubes(3)+Shoring Sheets(6)	245#
9.8 AS-EPK-08-92	End Panel Brackets(4), Tubes(3)+Shoring Sheets(8)	312#
For One End of the Shield Only		

10' High End Panel Kit		
9.10 AS-EPK-10-40	End Panel Brackets(4), Tubes(3)+Shoring Sheets(3)	159#
9.10 AS-EPK-10-50	End Panel Brackets(4), Tubes(3)+Shoring Sheets(4)	202#
9.10 AS-EPK-10-59	End Panel Brackets(4), Tubes(3)+Shoring Sheets(5)	244#
9.10 AS-EPK-10-68	End Panel Brackets(4), Tubes(3)+Shoring Sheets(6)	284#
9.10 AS-EPK-10-92	End Panel Brackets(4), Tubes(3)+Shoring Sheets(8)	364#
For One End of the Shield Only		

End Panel Brackets		
9.1 AS-EPBK-40	Brackets(4), Tubes(3), for PowerStrut-40	
9.1 AS-EPBK-50	Brackets(4), Tubes(3), for PowerStrut-50	
9.1 AS-EPBK-59	Brackets(4), Tubes(3), for PowerStrut-59	
9.1 AS-EPBK-68	Brackets(4), Tubes(3), for PowerStrut-68	
9.1 AS-EPBK-92	Brackets(4), Tubes(3), for PowerStrut-92	
For One End of the Shield Only		

End Panel Bracket Parts		
9.2 AS-EP-BK	End Panel Bracket(1)	6#
9.3 AS-EPT-40	Tubes(3) for End Panel for PowerStrut 40	15#
9.3 AS-EP-BK	Tubes(3) for End Panel for PowerStrut 50	18#
9.3 AS-EP-BK	Tubes(3) for End Panel for PowerStrut 59	22#
9.3 AS-EP-BK	Tubes(3) for End Panel for PowerStrut 68	25#
9.3 AS-EP-BK	Tubes(3) for End Panel for PowerStrut 92	30#



NEW!

SLIP-NOT

LADDER RETENTION SYSTEM

***The First Step in
“FALL PREVENTION”***

OSHA requires that all employees exposed to falls of 6 ft. or more be provided with fall protection. (29CFR192.500-Subpart M)

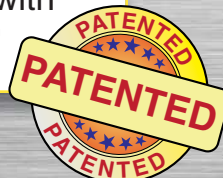
A ladder may ONLY be used on a stable, level surface, UNLESS it has been secured at the top or bottom to prevent displacement.

***SLIP-NOT™ is a fast, easy, and above all,
a SAFE method of securing the top of a ladder.***

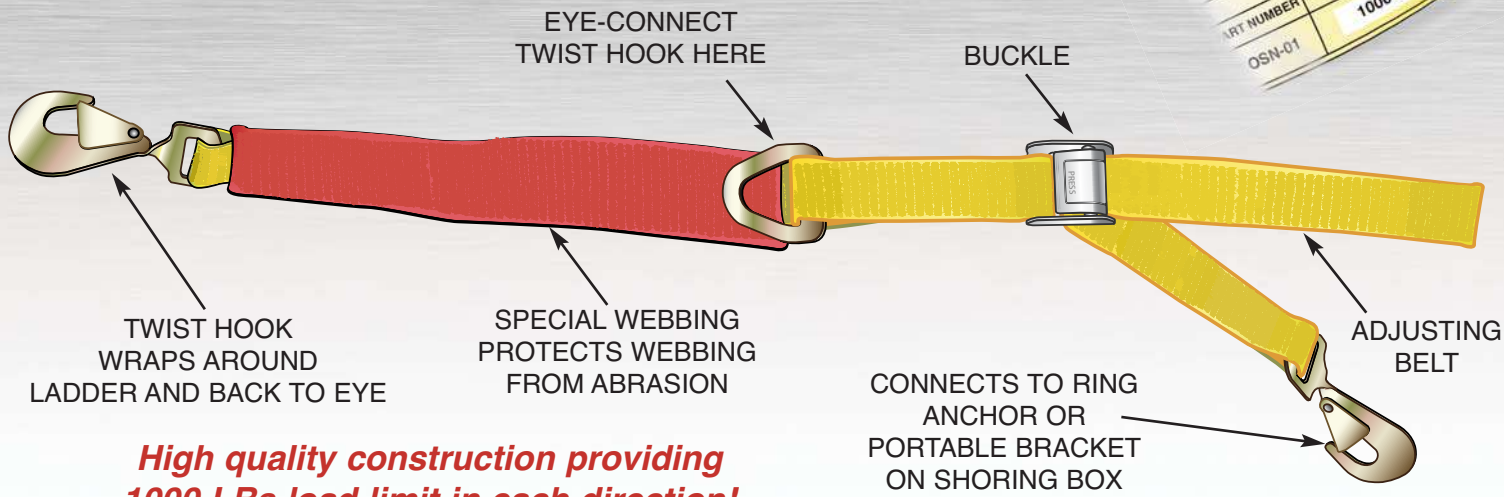


Designed primarily for use within trench shoring systems, our patented ladder retention system will provide unparalleled safety for the entrance and egress of a shored trench or pit.

Simple and easy to use,
the SLIP-NOT™ system is the practical way to comply with O.S.H.A. regulations!



The SLIP-NOT™ Advantage



High quality construction providing 1000 LBs load limit in each direction!

EASY INSTALLATION AND REMOVAL

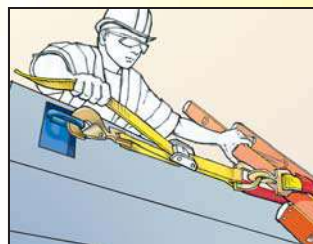
IN MINUTES!



1 FROM YELLOW WEBBING SIDE OF BRACE, ATTACH HOOK TO THE BRACKET RING.



2 LOOP THE RED WEBBING AND HOOK AROUND LADDER SIDE RAIL AND CLIP TWIST HOOK TO EYE RING.

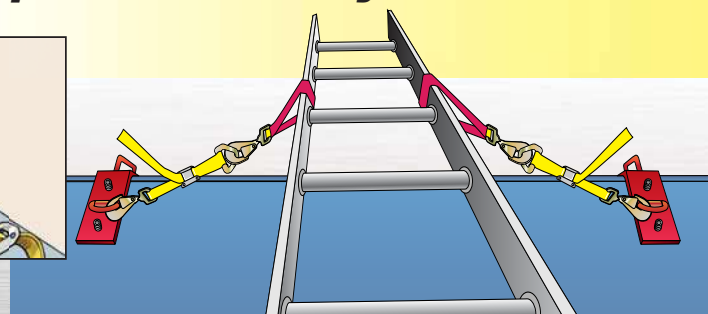
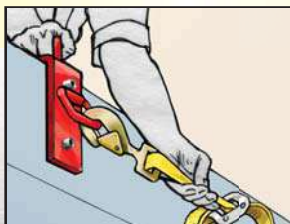


3 TIGHTEN BELT BY PULLING YELLOW ADJUSTING BELT



REPEAT STEPS 1 THRU 3 ON OTHER SIDE OF LADDER. LADDER IS NOW SECURE AND MAY BE USED SAFELY.

Make any box "Slip-Not" ready!

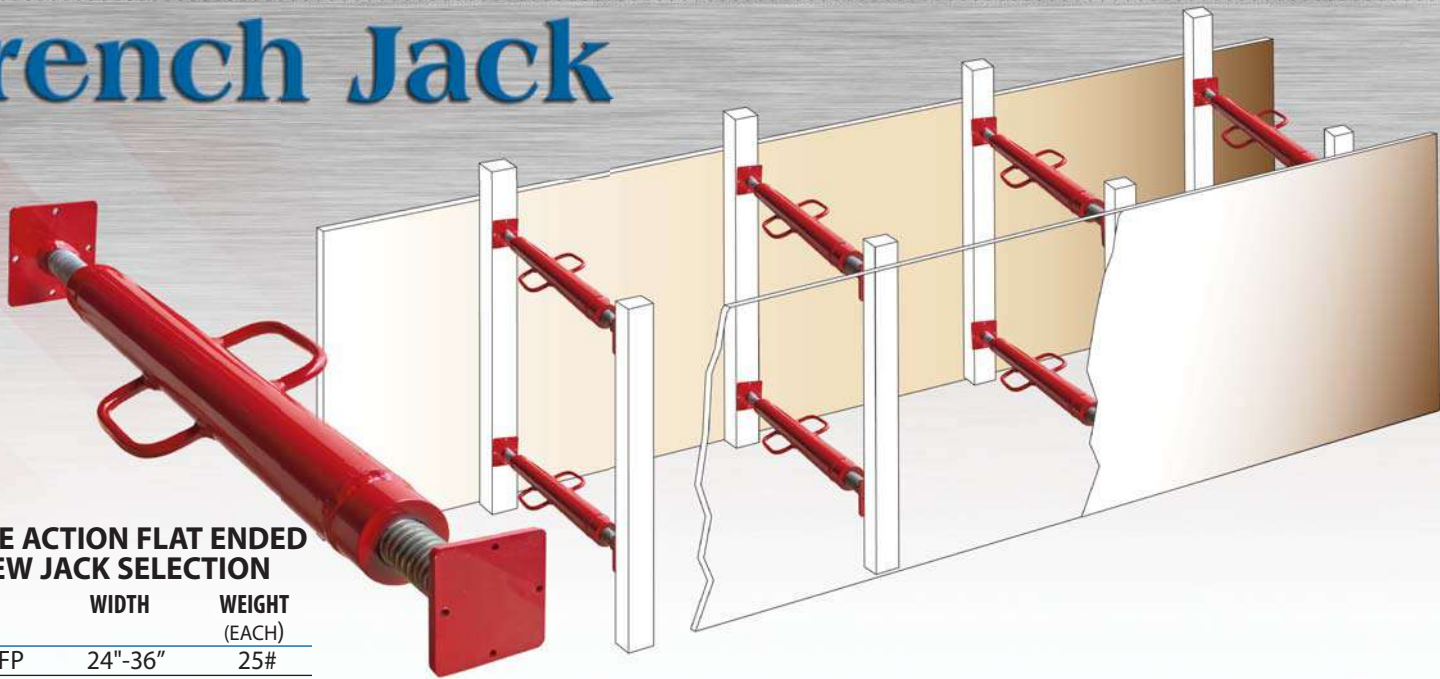


With Our Bolt-On Slip-Not Clamp and Bracket Sets

Comes complete with two adjustable ladder straps, two bolt on brackets with ring anchors, stainless steel set screws and allen wrench.

AMERICAN SHORING INC.
1.800.407.4674
www.americanshoring.com

Trench Jack



DOUBLE ACTION FLAT ENDED SCREW JACK SELECTION

MODEL	WIDTH	WEIGHT (EACH)
ESJ-23-FP	24"-36"	25#
ESJ-35-FP	36"-60"	38#
ESJ-57-FP	60"-84"	42#
ESJ-79-FP	84"-108"	49#

OTHER SIZES ON REQUEST



Angle End

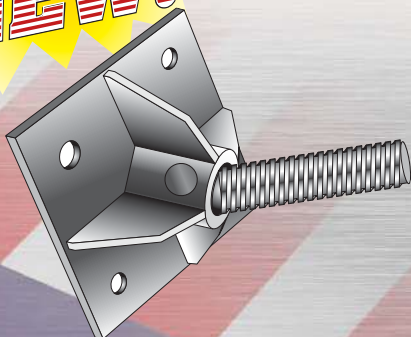
DOUBLE ACTION ANGLE ENDED SCREW JACK SELECTION

MODEL	WIDTH	WEIGHT (EACH)
ESJ-23-AE	24"-36"	25#
ESJ-35-AE	36"-60"	38#
ESJ-57-AE	60"-84"	42#
ESJ-79-AE	84"-108"	49#

OTHER SIZES ON REQUEST



NEW!



NEW! Swivel End

DOUBLE ACTION SWIVEL ENDED SCREW JACK SELECTION

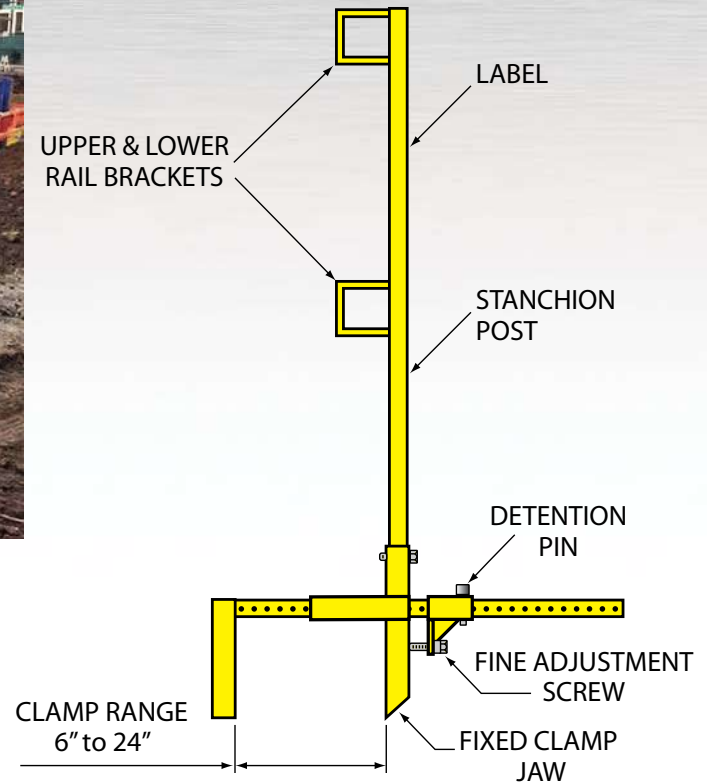
MODEL	WIDTH	WEIGHT (EACH)
ESJ-23-SE	24"-36"	25#
ESJ-35-SE	36"-60"	38#
ESJ-57-SE	60"-84"	42#
ESJ-79-SE	84"-108"	49#

OTHER SIZES ON REQUEST

Portable Guard Rail



The Portable Construction Guardrail is designed to be used as a passive fall prevention barrier at leading edges or internal openings.



**Complies with
O.S.H.A.
Regulations**

**AMERICAN
SHORING INC.**
1.800.407.4674
www.americanshoring.com

Made in the USA

From **Design**[™]
to **Delivery**



**Ask About Our
Steel Trench Shield,
Slide Rail System &
Light Steel Catalogs!**



**American Shoring is the
Leader in High Quality,
Modular Trench Shoring**



Remediation Slide Rail



Rock Boxes



Manhole Boxes



The Versatile "Z" Box

Our staff is waiting for your call with professional advice to recommend the best specific product for your project.

Field service support and supervision available with on site assembly and take down.

All systems are manufactured in the USA.



Large Steel Shields



Mega Strut Slide Rail

**We Invite Comparisons!
When You Compare...We Win!**

★ **SALES AND RENTALS** ★
★ **REPAIRS** ★
★ **RE-CERTIFICATION** ★
★ **TRADE-INS** ★

**COMPETENT PERSON AND
O.S.H.A. TRAINING SEMINARS!**

© 2014 AMERICAN SHORING INC.

SPECIFICATIONS ARE SUBJECT TO CHANGE WITHOUT NOTICE. ALL ASI PRODUCTS ARE TO BE USED IN CONFORMANCE WITH SAFE PRACTICES AND ALL FEDERAL STATE AND LOCAL LAWS. FOR ANY SUBJECT NOT SPECIFICALLY COVERED IN THIS PUBLICATION, THE USER SHALL REFER TO O.S.H.A. REGULATIONS.



1.800.407.4674

207 Lake Street, Newburgh, NY 12550

E-Mail us at

sales@americanshoring.com

Visit our website at

www.americanshoring.com



226 Cherry Street, Shrewsbury, Mass 01545

508-842-2822

Fax: 508-842-2824