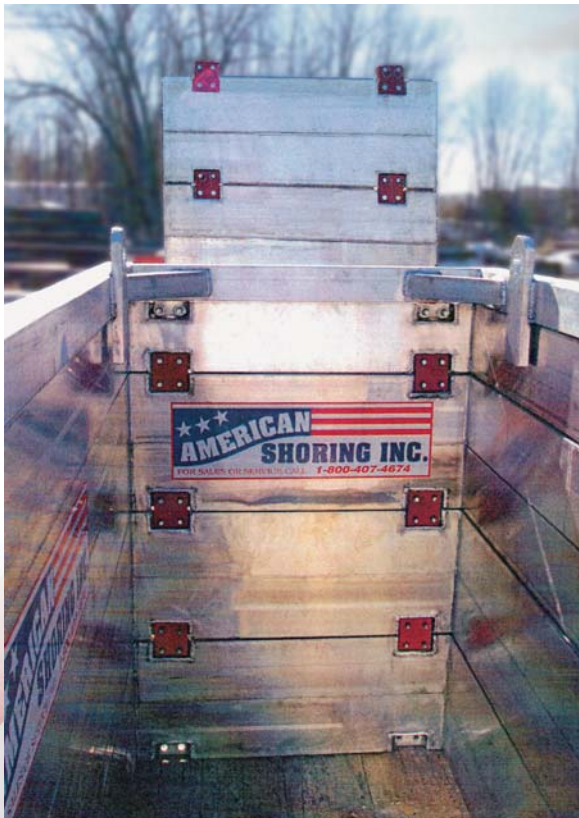
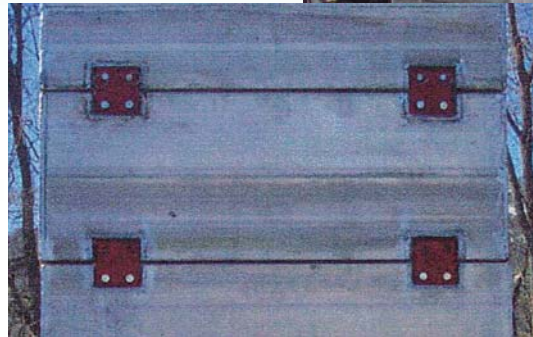


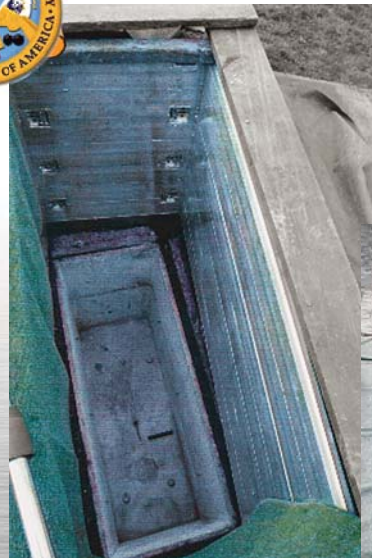
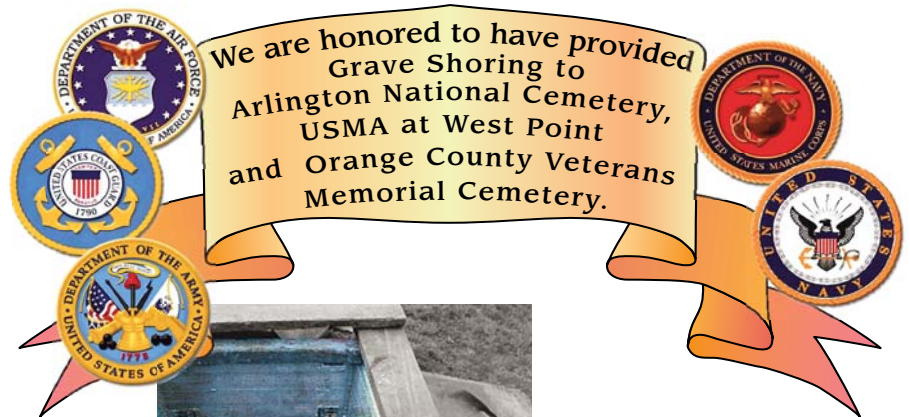
Grave Shoring

Grave shoring generally consists of modular units utilizing strong yet light weight aluminum for the shoring of graves and small excavations. Easy to install and extract, is easily transportable, and yet combines simplicity with durability and efficiency of operation.

- ★ Professional Engineer Certified
- ★ Constructed of light weight aluminum
- ★ Flush inside and out
- ★ Easy install and extract
- ★ Knocks down to a small package-fits easily into a pick-up truck
- ★ Custom sizes available
- ★ Foam filled



STACKING SECTIONS FOR REQUIRED DEPTH. TOP PROTECTION UNIT SHOWN ABOVE.



BUILT TO ACCOMMODATE ANY VAULT SIZE

