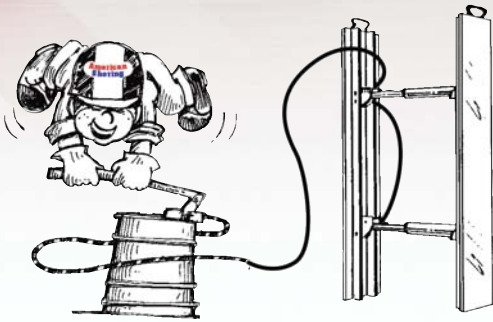
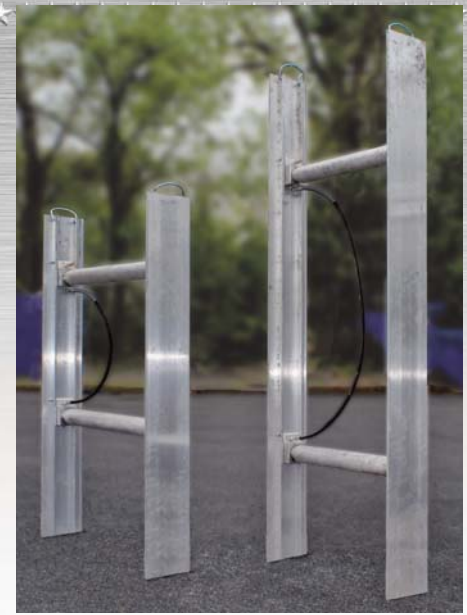


# Hydraulic Shoring

## Standard Vertical Shores

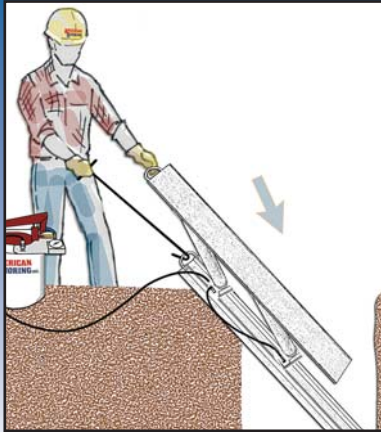


Pump with gauge, valve, hose and quick disconnect fittings. Pump's gauge regulated pressure ensures evenly applied loads. Wire braided hoses are protected by spring guards.



### Installation and Removal from Above Ground

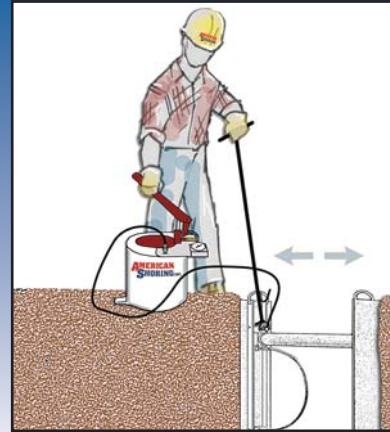
#### INSTALLATION



Connect hydraulic hose line to fitting. Position shore at edge of trench.

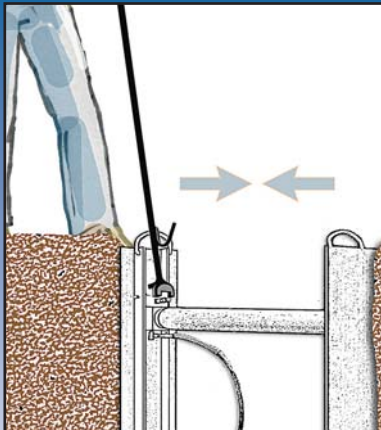


Lower shore into trench per O.S.H.A. requirements. Use release tool nearest to you and removal hook on far side.

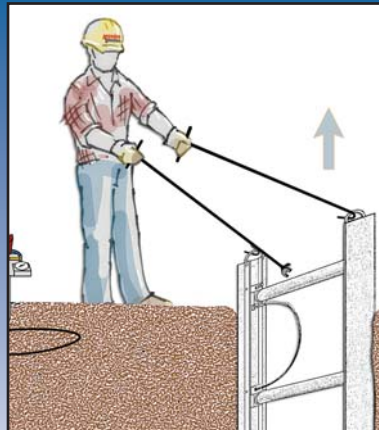


Pump to minimum pressure of 750 psi. Disconnect hose from fitting using the release tool.

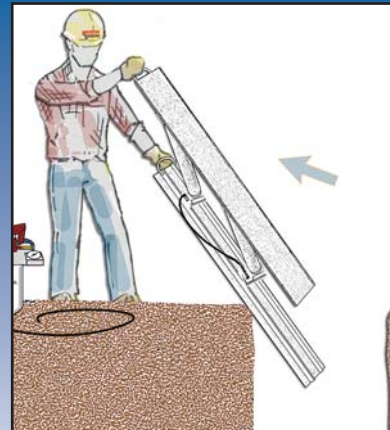
#### REMOVAL



Release the shoring fluid at fitting using the release tool.



Remove the shoring assembly from trench using both release and removal hook.



Complete hydraulic shore assembly folds flat for portability to next location. Always keep fingers clear of pivot pump.